

# Virtualization with Oracle VM VirtualBox

## Installing Windows XP Guest OS



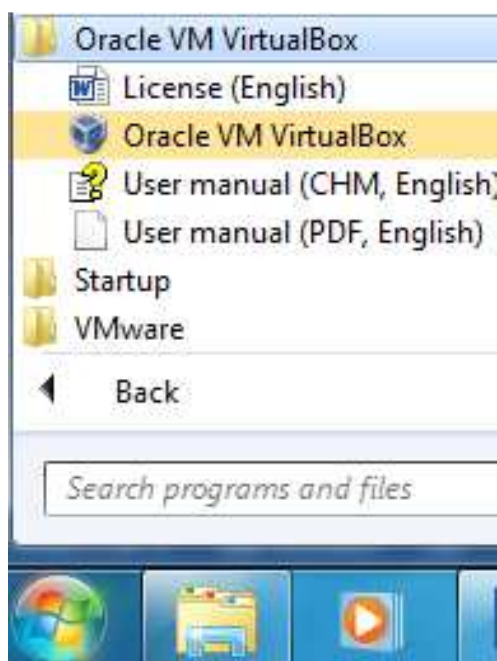
## Contents

1. Version History ..... 34

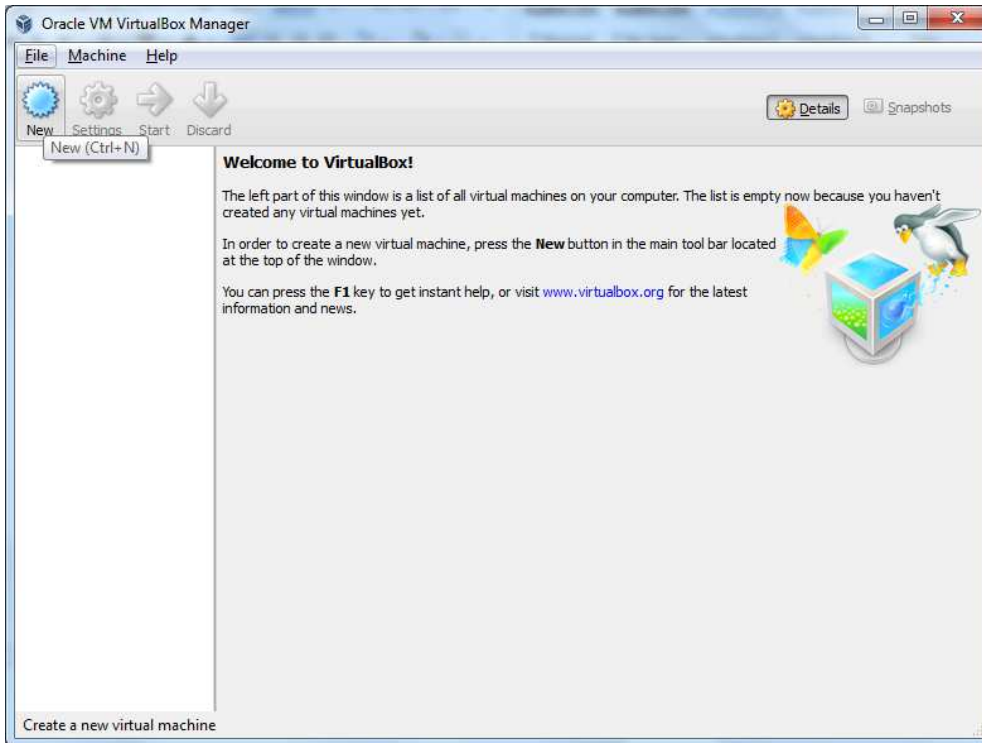
This document will help you install **Windows XP** Guest Operating System under **Windows 7 32-bit** Host Operating System using **Oracle VM VirtualBox** product. You would need a valid licence key of **Windows XP** in order to proceed.

Installing virtual operating system is very similar to installing an operating system on a physical PC / laptop. The only difference is that you are installing it in a virtualized environment of a Host Operating System where a particular virtualization product is mounted in order to create an environment for the system to host virtualized machines. So you would still need to have a separate licence for the Guest Operating System. For example, the following document described installing Windows XP Guest Operating System on a Windows 7 Host Operating System. Therefore, a valid licence is required for the Host Operating System which is installed on a physical machine, and another valid licence is also required for Guest Operating System which would be installed in a virtualized environment. Usually, the PC / laptop you have purchased would already come with an OEM licence of Windows 7 unless you are building your own machine from parts bought separately rather than buying a branded systems from Dell, Toshiba, etc. You would also require a valid licence of the virtualization product you will be using. We will be using 30 days evaluation licence of VMware Workstation product.

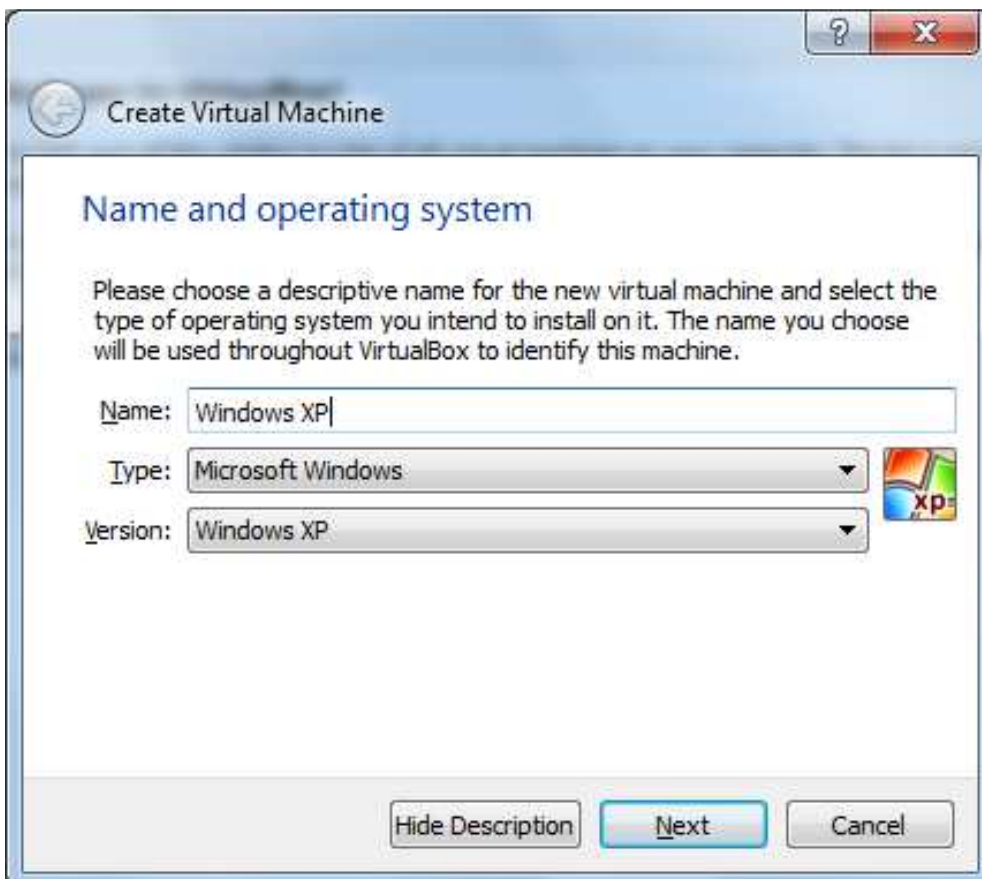
1. Please make sure that you have inserted the “**Windows XP**” installation CD in your CD / DVD / Blu-ray Optical Drive and note the CD / DVD Drive letter. In the following demonstration, the CD / DVD drive letter is **E:**
2. Run “**Oracle VM VirtualBox**” application by clicking **Start -> All Programs -> Oracle VM VirtualBox -> Oracle VM VirtualBox** as shown below:



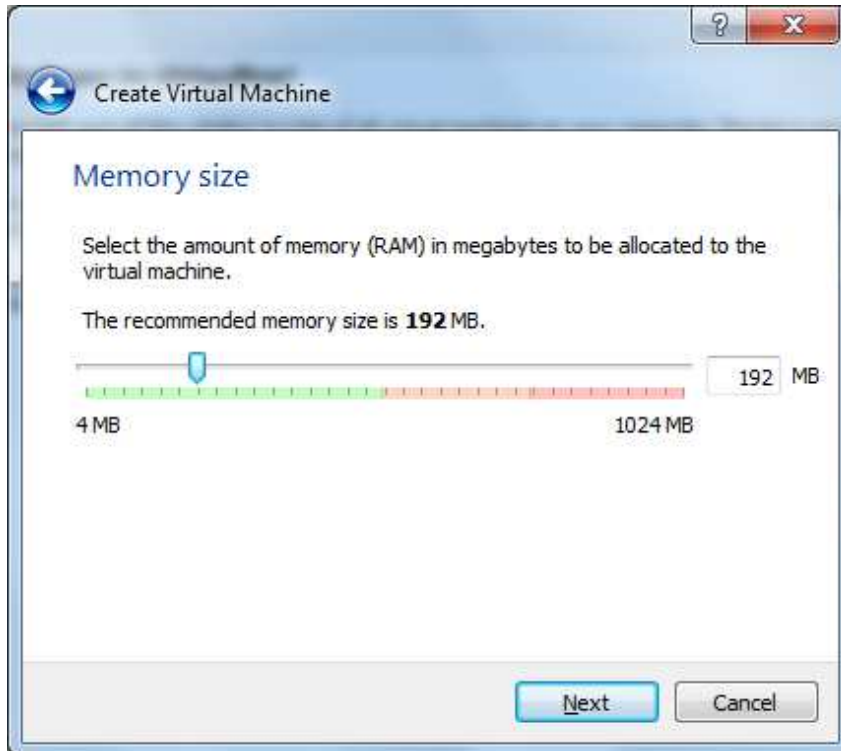
3. Click “New” when you are presented with the following:



4. Give a name to the virtual machine, “**Windows XP**” or one of your own choosing, select “**Microsoft Windows**” from “**Type:**” drop-down list, “**Windows XP**” from “**Version:**” drop-down list, and then click “**Next**” when you are presented with the following:

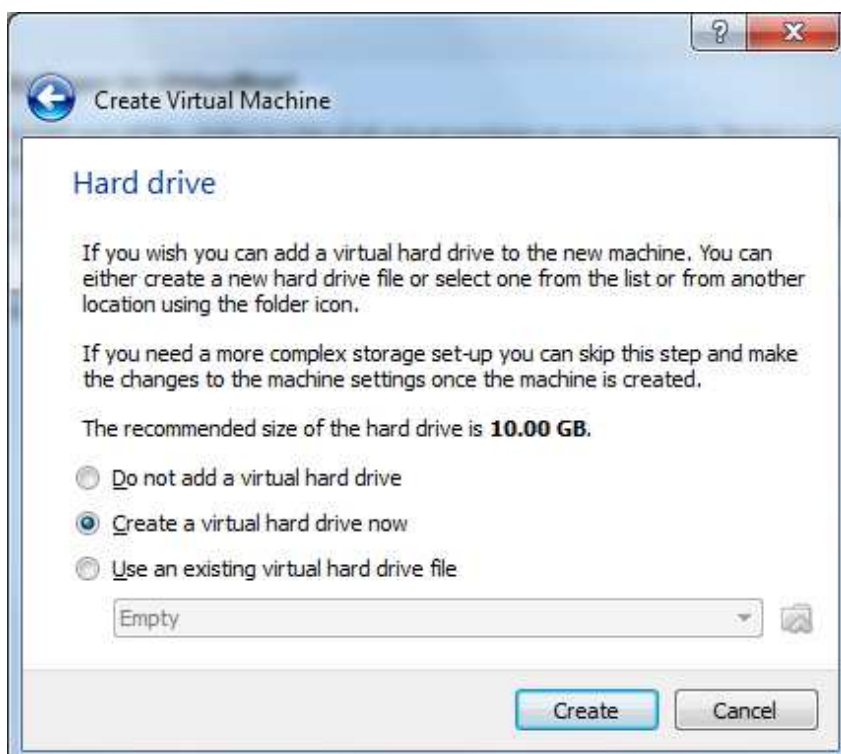


5. Click **“Next”** when you are presented with the following:

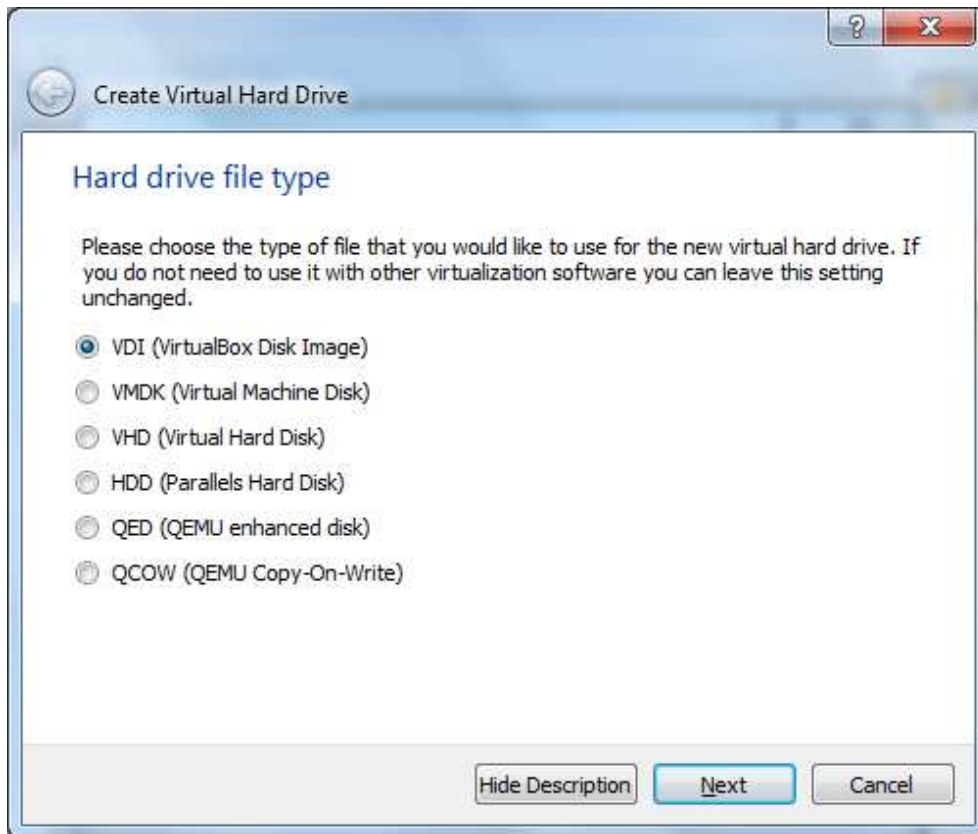


You can increase the amount of memory to be allocated if you wish by using the slider bar or by entering the exact amount you want such as 512, 768 and so on into the textbox where the number 192 is shown as default.

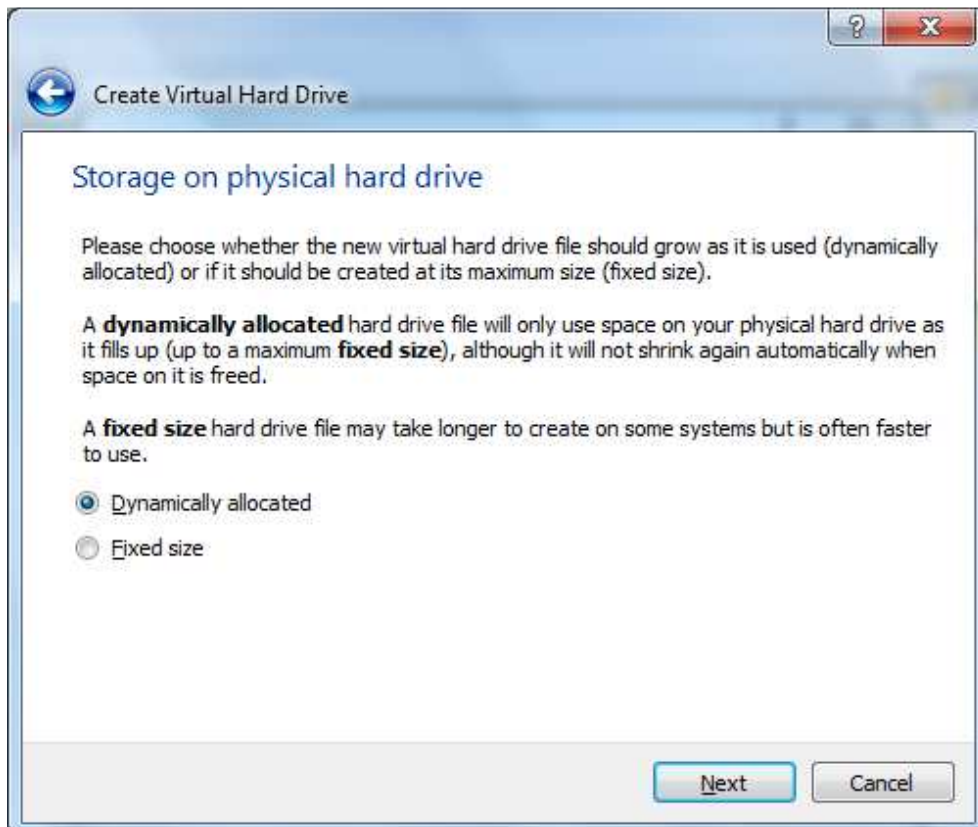
6. Select the option **“Create a virtual hard drive now”**, and click **“Create”** when you are presented with the following:



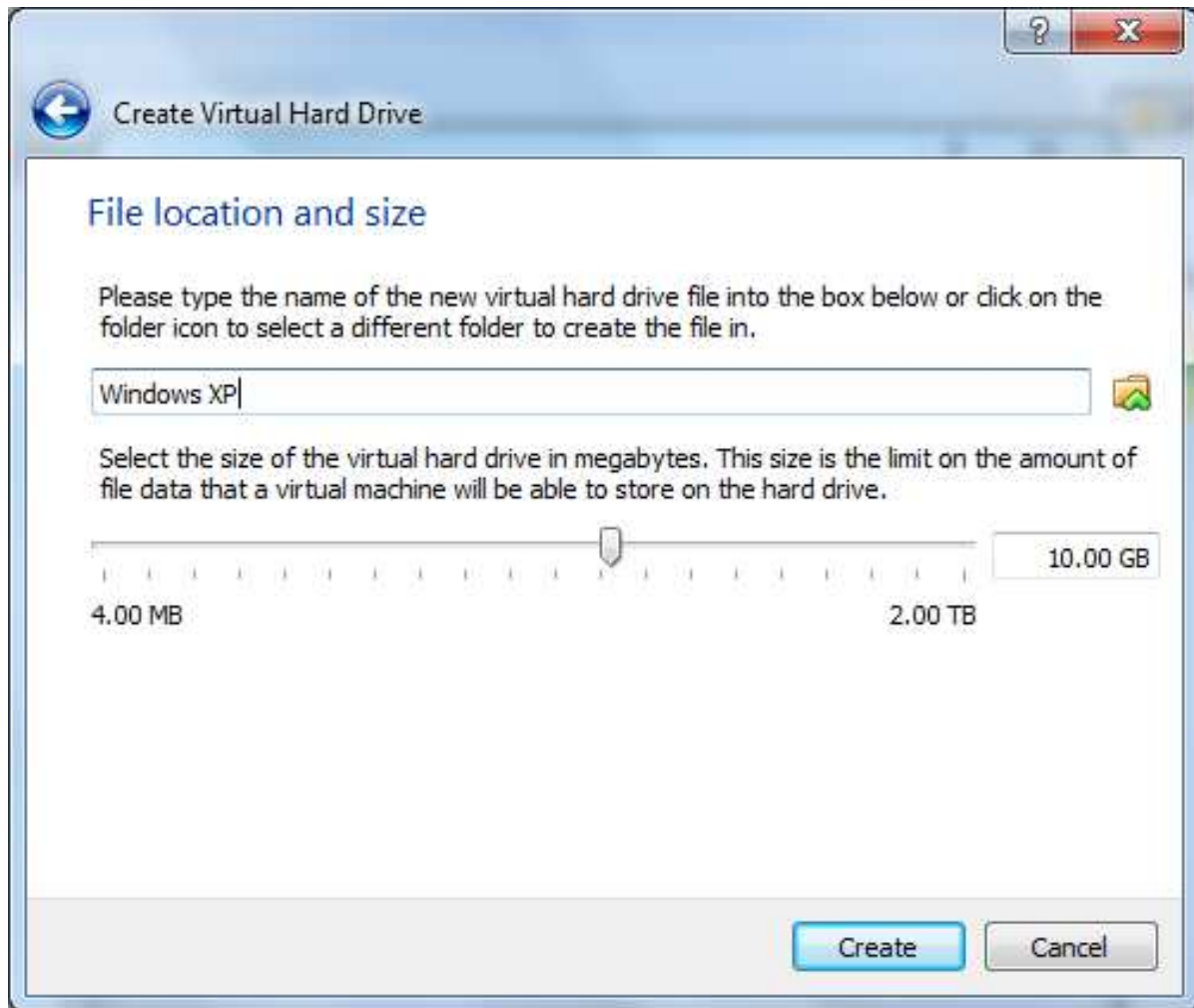
7. Select the option “**VDI (VirtualBox Disk Image)**”, and click “**Next**” when you are presented with the following:




8. Select the option “**Dynamically allocated**”, and click “**Next**” when you are presented with the following:

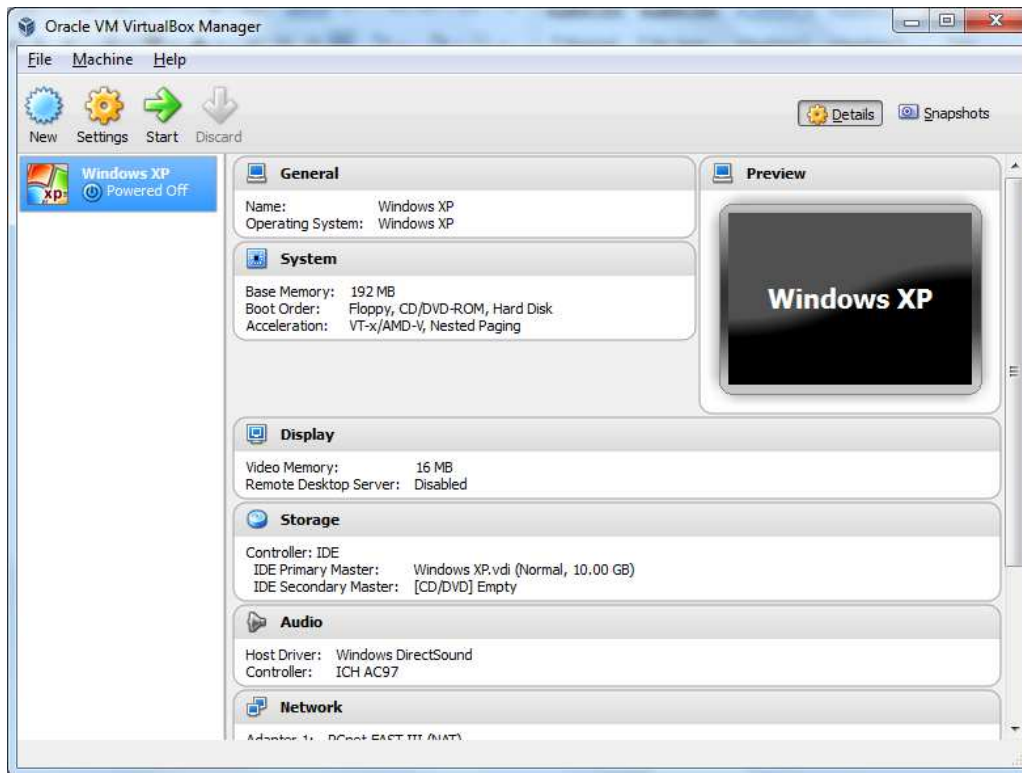


9. Click “Create” when you are presented with the following:

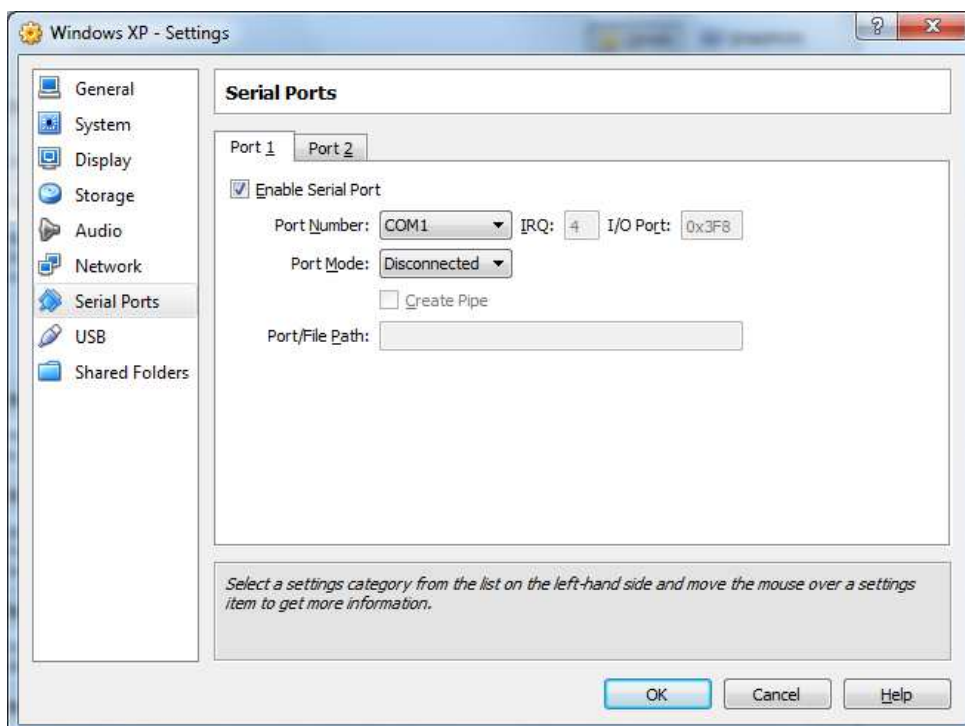


You can change the maximum size of the virtual hard drive that will be allocated to the virtual machine if you wish to do so. You can also change the location of the virtual hard drive by clicking the icon  if you wish to do so in case you would like to store this in a location with more disk space and so on. Since we are using “Dynamically allocated” virtual hard drive, the space will be allocated as required for the virtual machine and this will have a maximum size of 10 GB by default as shown above or the number you specified.

10. You have now created an environment where you can start to install “**Windows XP**” operating system, and you will be presented with the following:

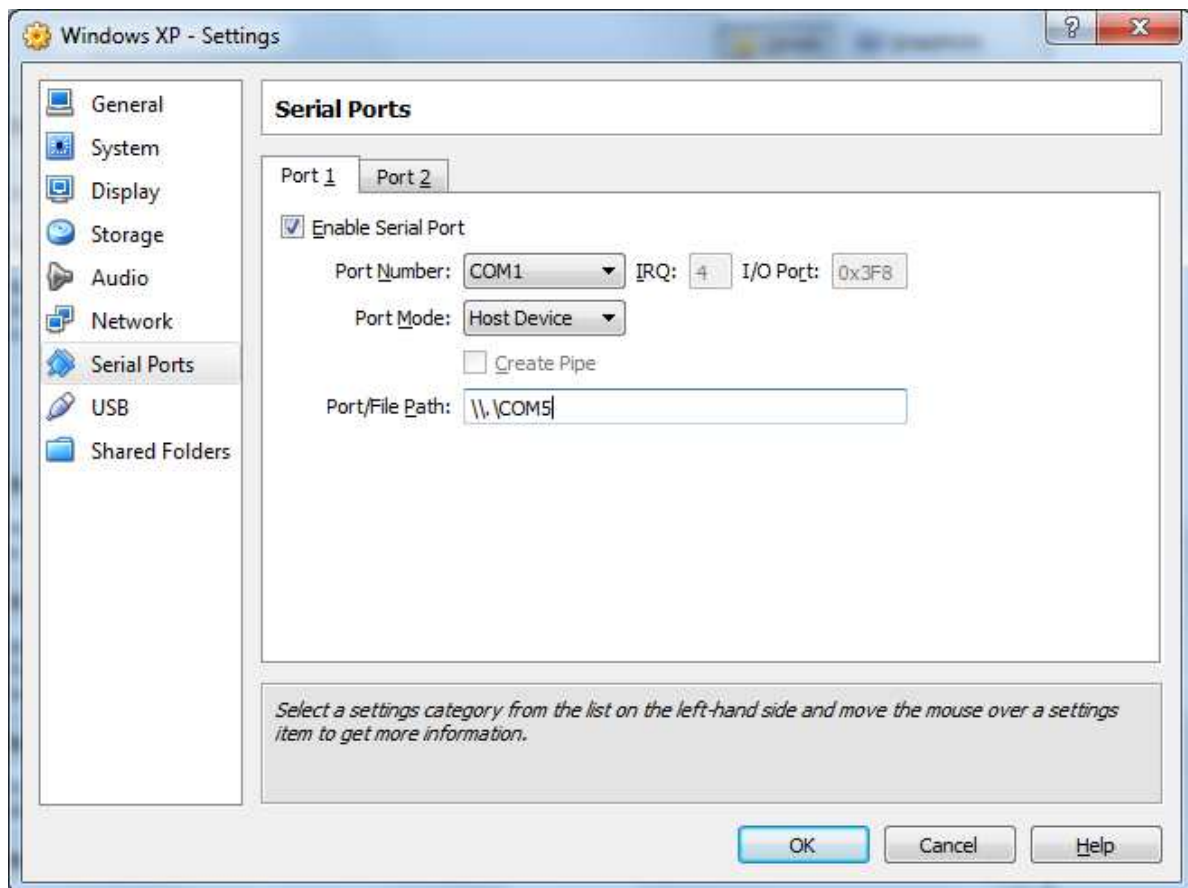


11. Click and select “**Windows XP**” entry in the list, and click “**Settings**”
12. Click and select “**Serial Ports**” entry in the list, and check “**Enable Serial Port**” option for “**Port 1**” tab when you are presented with the following:

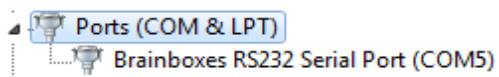




13. Select “Host Device” from “Port Mode:” drop down list, and enter “\\.\COM5” into “Port/File Path:” textbox as shown below:

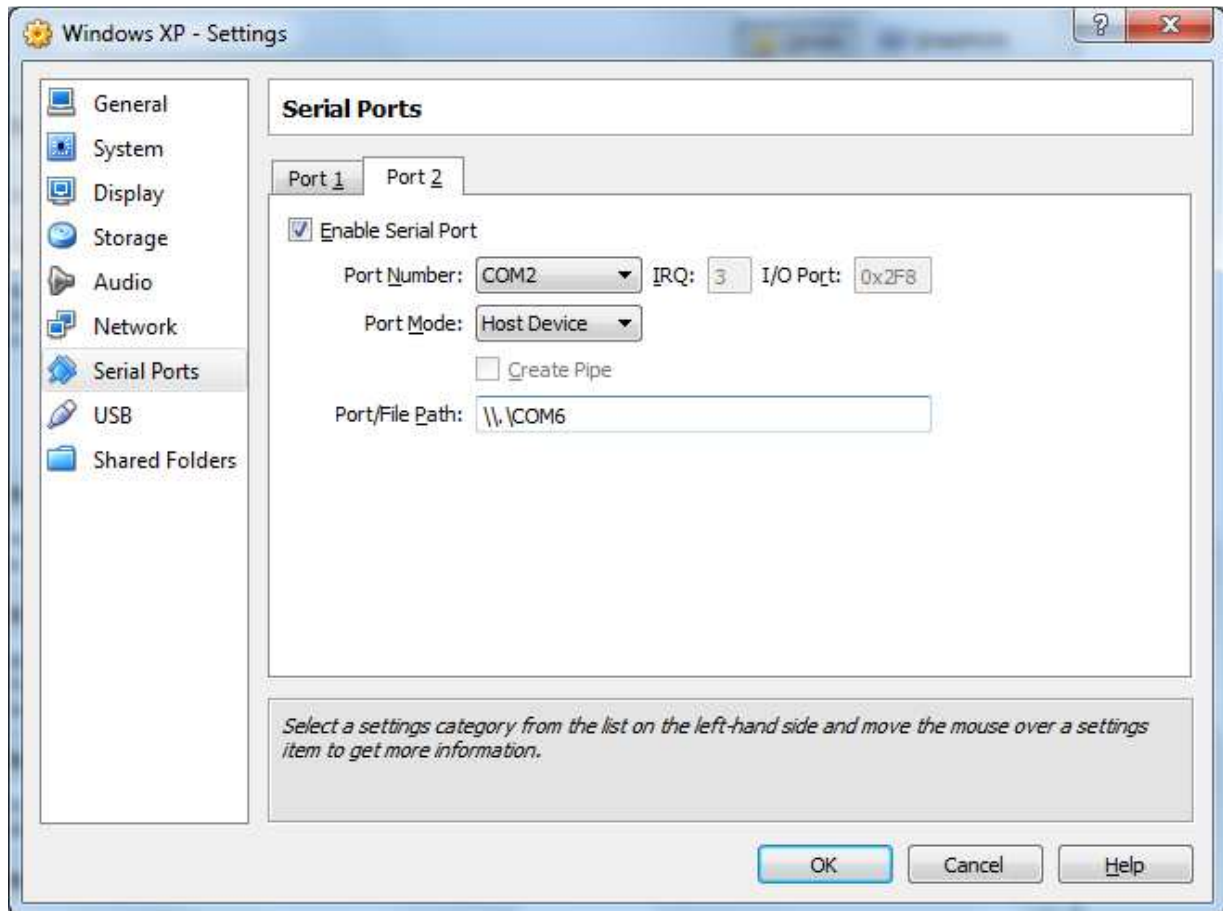


Please note that for this demonstration I have installed Brainboxes **US-101** product in the Host Operating System and this is installed as “**COM5**” in my machine as shown below:



You might have a different COM Port label on your machine such as **COM3**, **COM4** and so on. Please select the correct COM Port label to map accordingly by checking the “**Ports (COM & LPT)**” section under **Device Manager**. For example, if you have installed **US-101** as **COM4** on your machine, you will have to enter “**\\.\COM4**” into “**Port/File Path:**” textbox.

If you would like to map two Serial Ports in case you have installed two Brainboxes US-101 products or a Brainboxes product with two Serial Ports in your machine, please select “**Port 2**” tab like shown below:

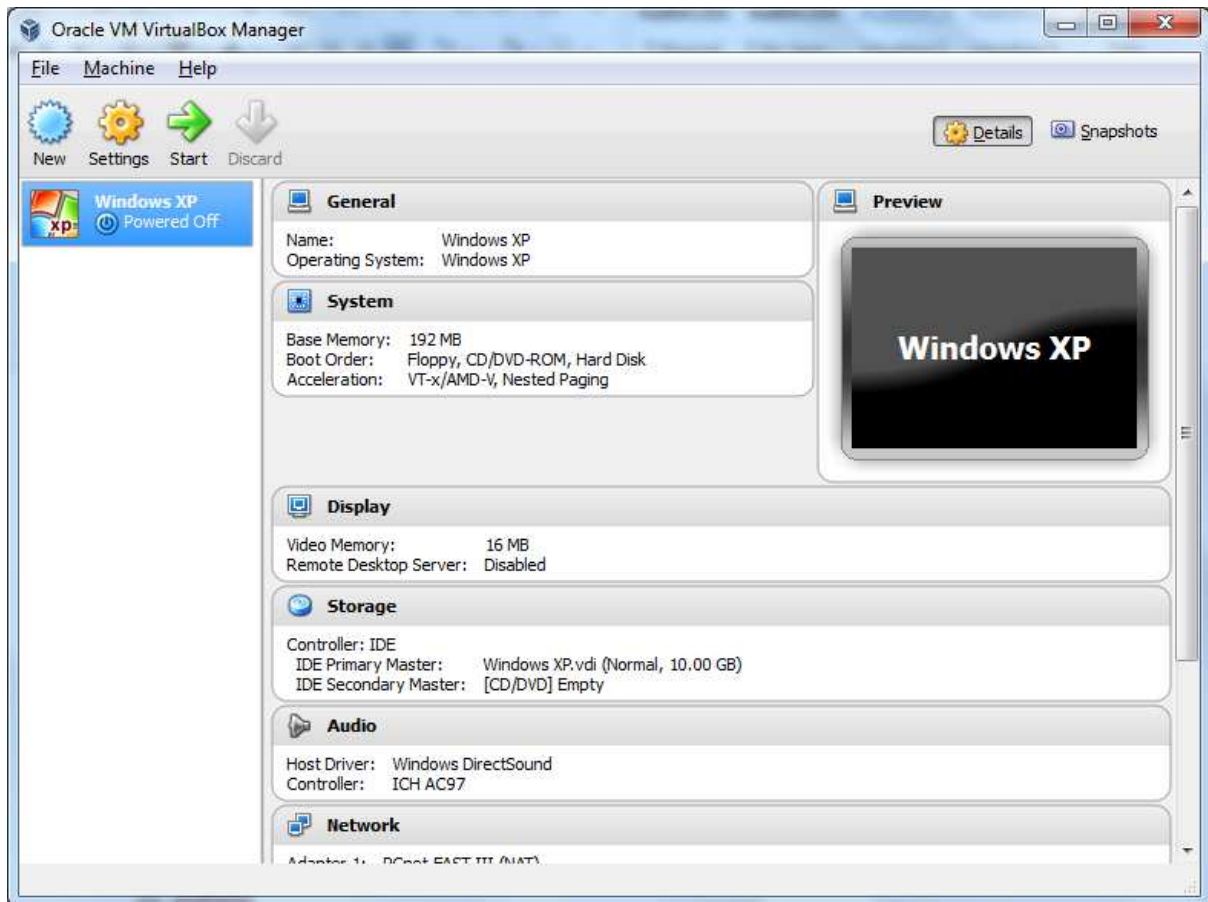


Again, you might have a different COM Port label on your machine such as **COM3**, **COM4** and so on. Please select the correct COM Port label to map accordingly by checking the “**Ports (COM & LPT)**” section under **Device Manager**. For example, if you have installed another **US-101** as **COM7** on your machine, you will have enter “**\\.\COM7**” into “**Port/File Path:**” textbox.

In this demonstration, I will only be mapping one Serial Port. Please follow the steps as described above if you would like to also map two Serial Ports.

14. Click “**OK**” after you have finished mapping the COM Ports. You will then be taken back to the screen as shown in Step 10.

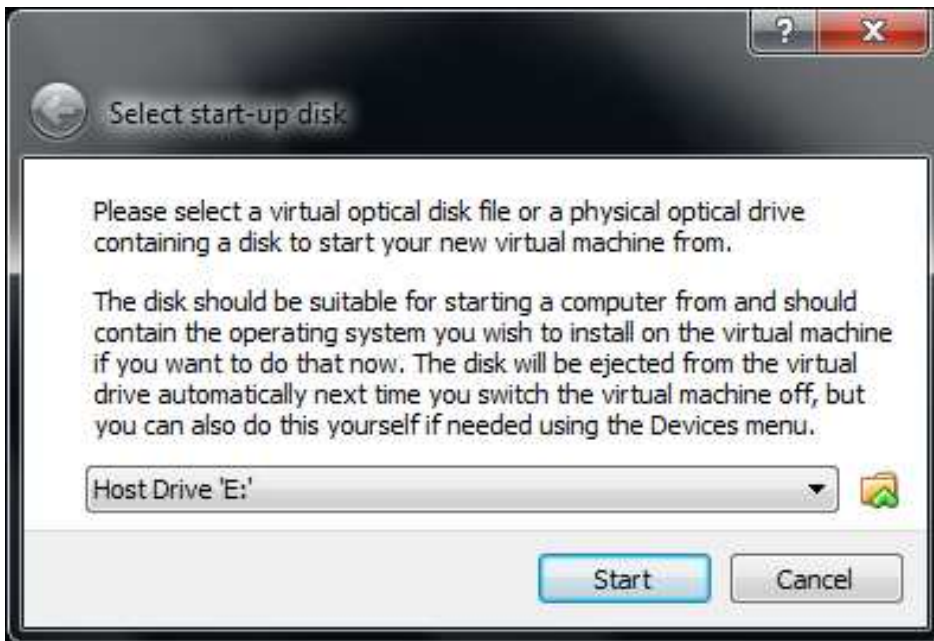
15. Now we will begin the process of installing “**Windows XP**” Guest Operating System by clicking “**Start**” when you are presented back to the following screen:




16. Check the option “**Do not show this message again**”, and click “**OK**” when you are presented with the following:

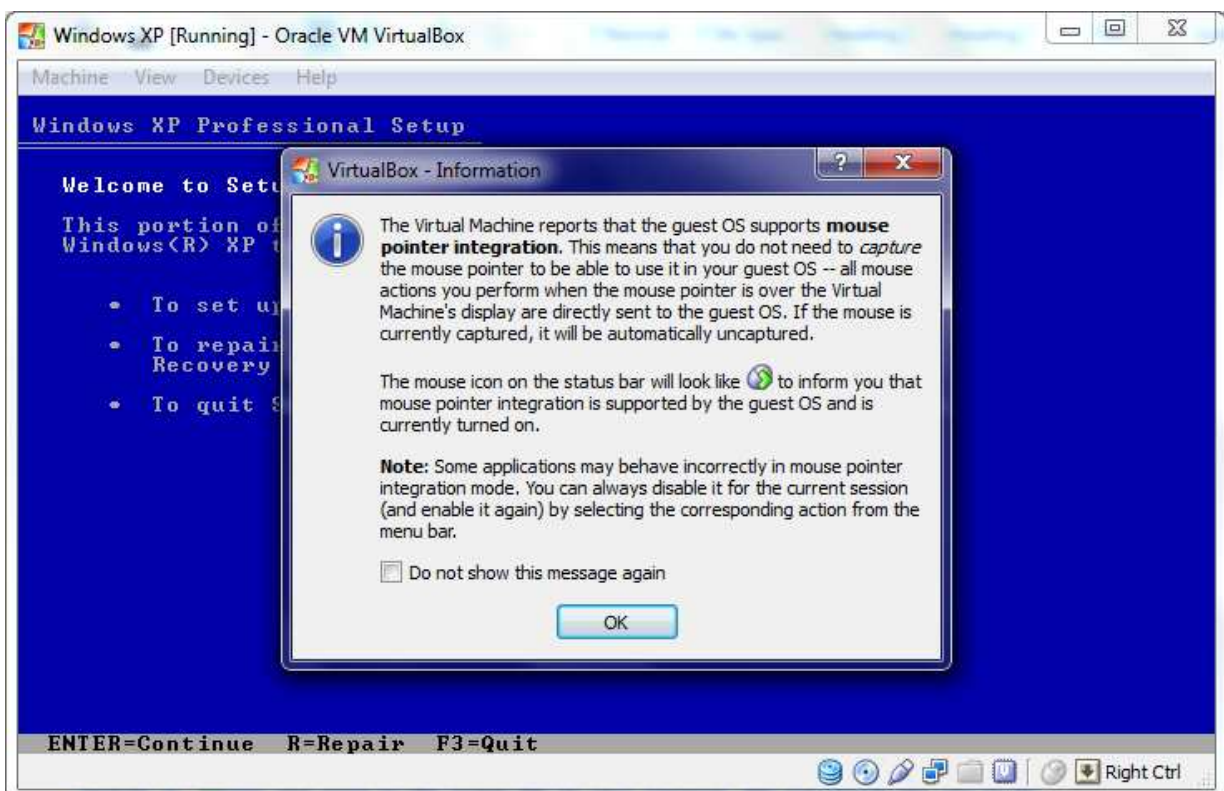


17. Make sure you have inserted the “**Windows XP**” installation CD into your CD / DVD / Blu-ray Optical Drive , and click “**Start**” when you are presented with the following:



In this demonstration, the optical drive is “E:” but this could be different for your machine. You could also install the operating system from an “**image**” file such as “.iso” file, “.img” file, etc. by clicking on  icon and point to the image file on your machine. We just would like you to be aware of the option even though we will not be using this method of installation in this demonstration.

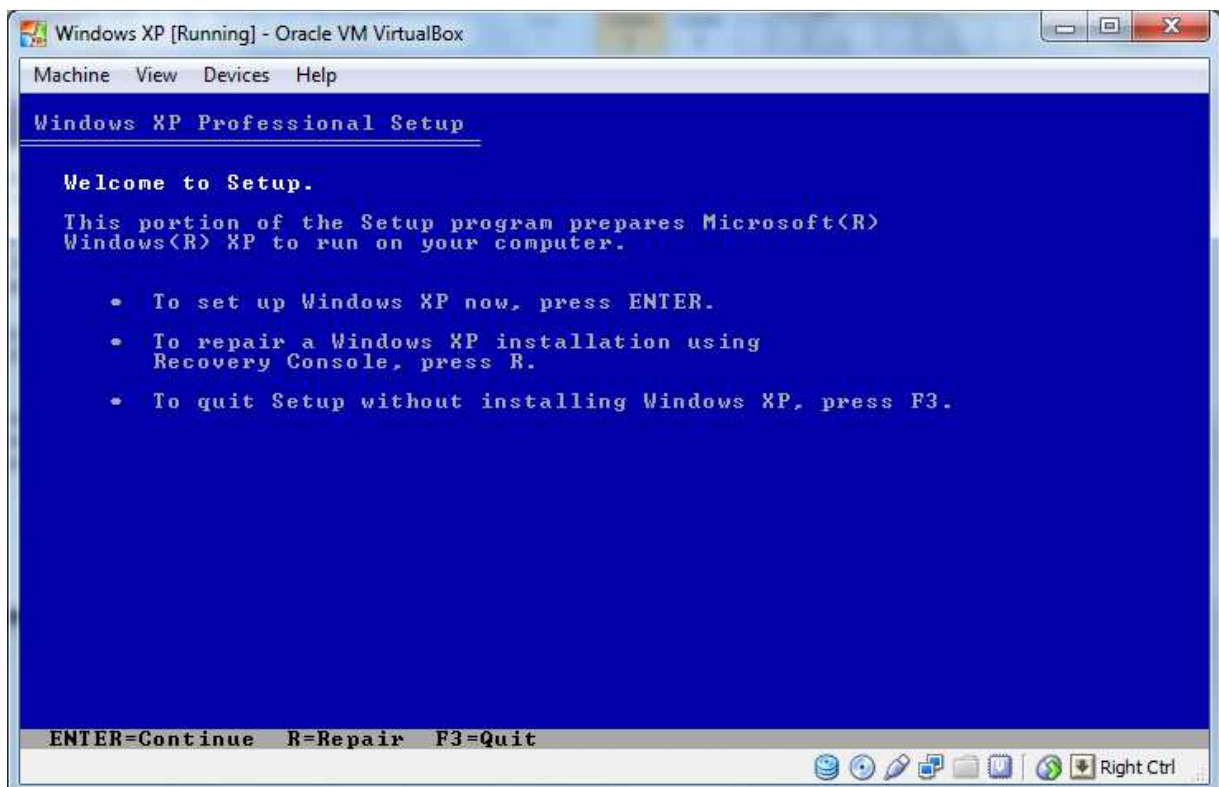
18. The installation process will start. Please wait until you are presented with the following:



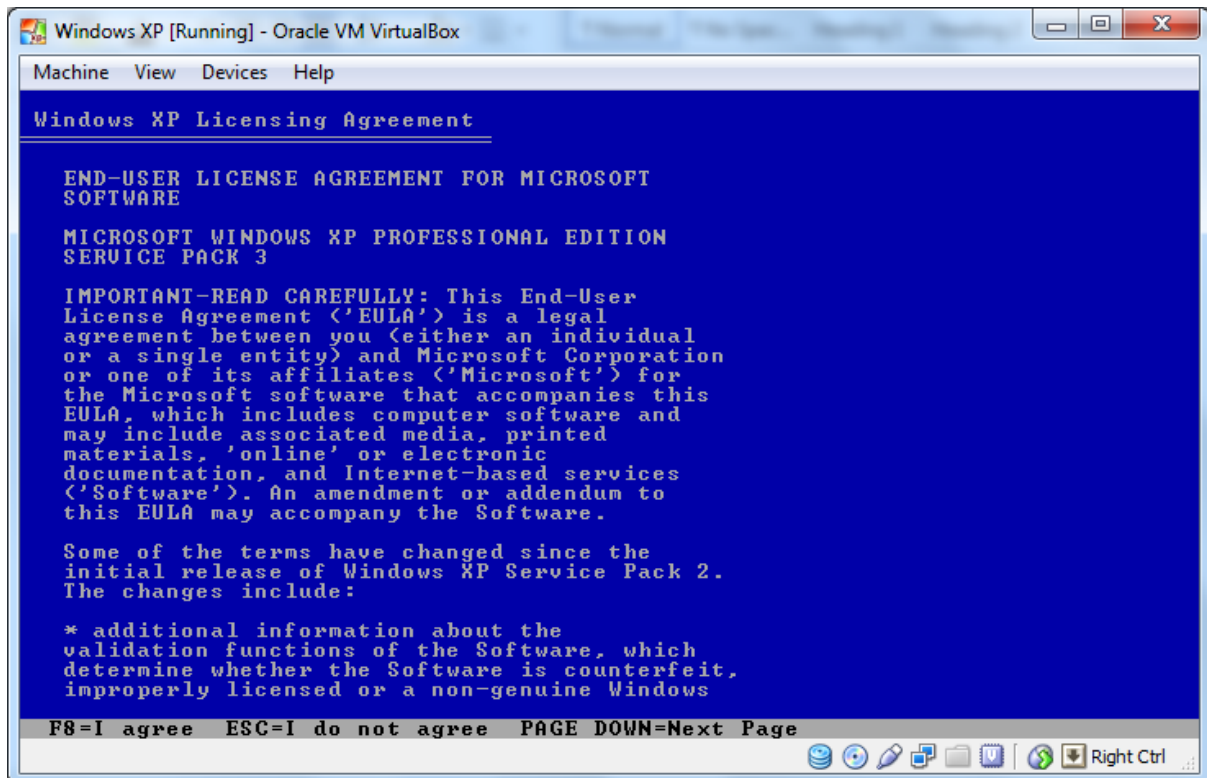
19. Check “Do not show this message again” option, and click “OK” in order to get pass the following:



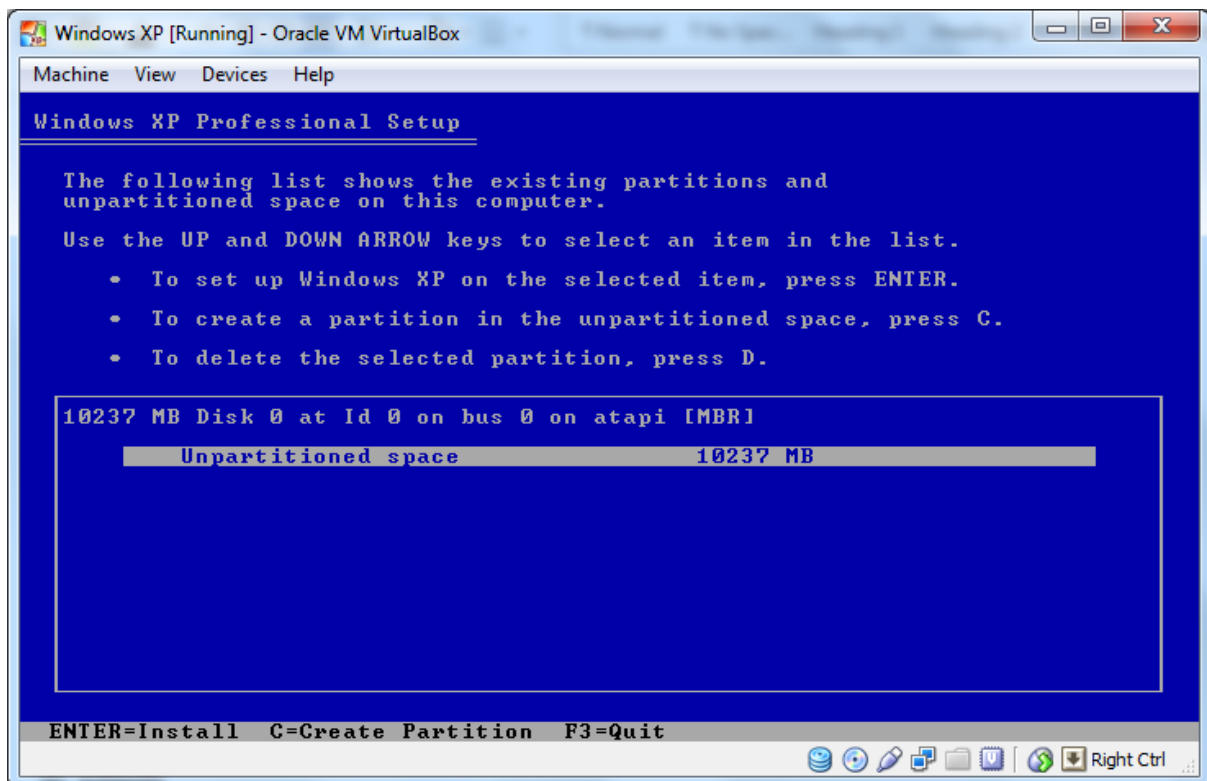
20. Remember to press the “Right Ctrl” key if you ever find yourself stuck inside the “Windows XP” Guest Operating System windows.
21. Point your mouse and click on the “Windows XP” Guest Operating System windows and press “Enter” when you are presented with the following:



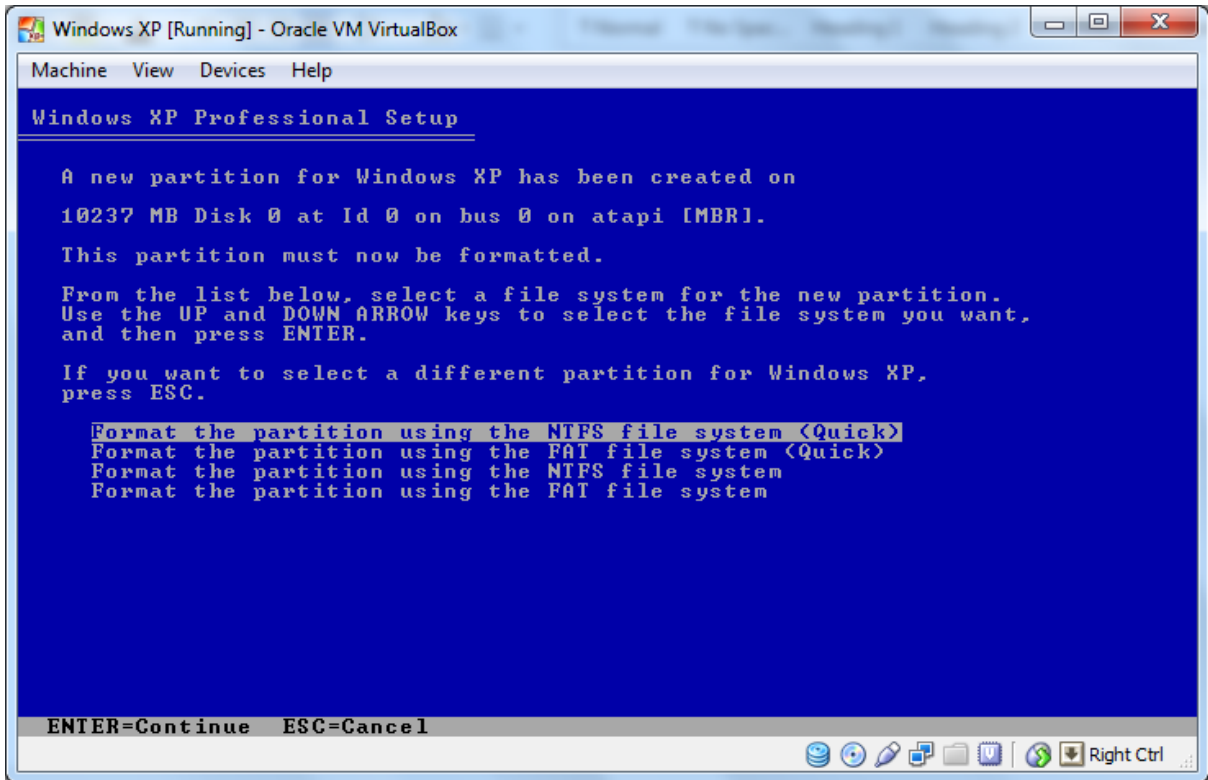
22. Press “F8” when you are presented with the following:



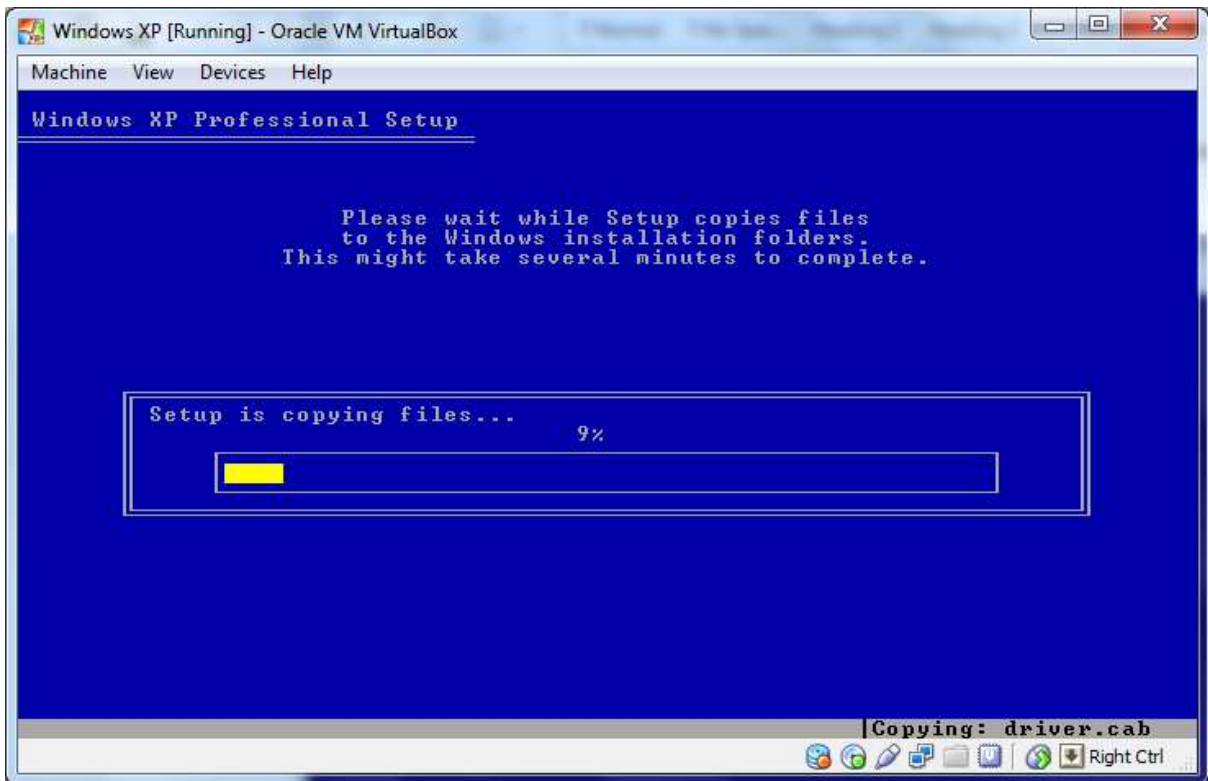
23. Press “Enter” when you are presented with the following:



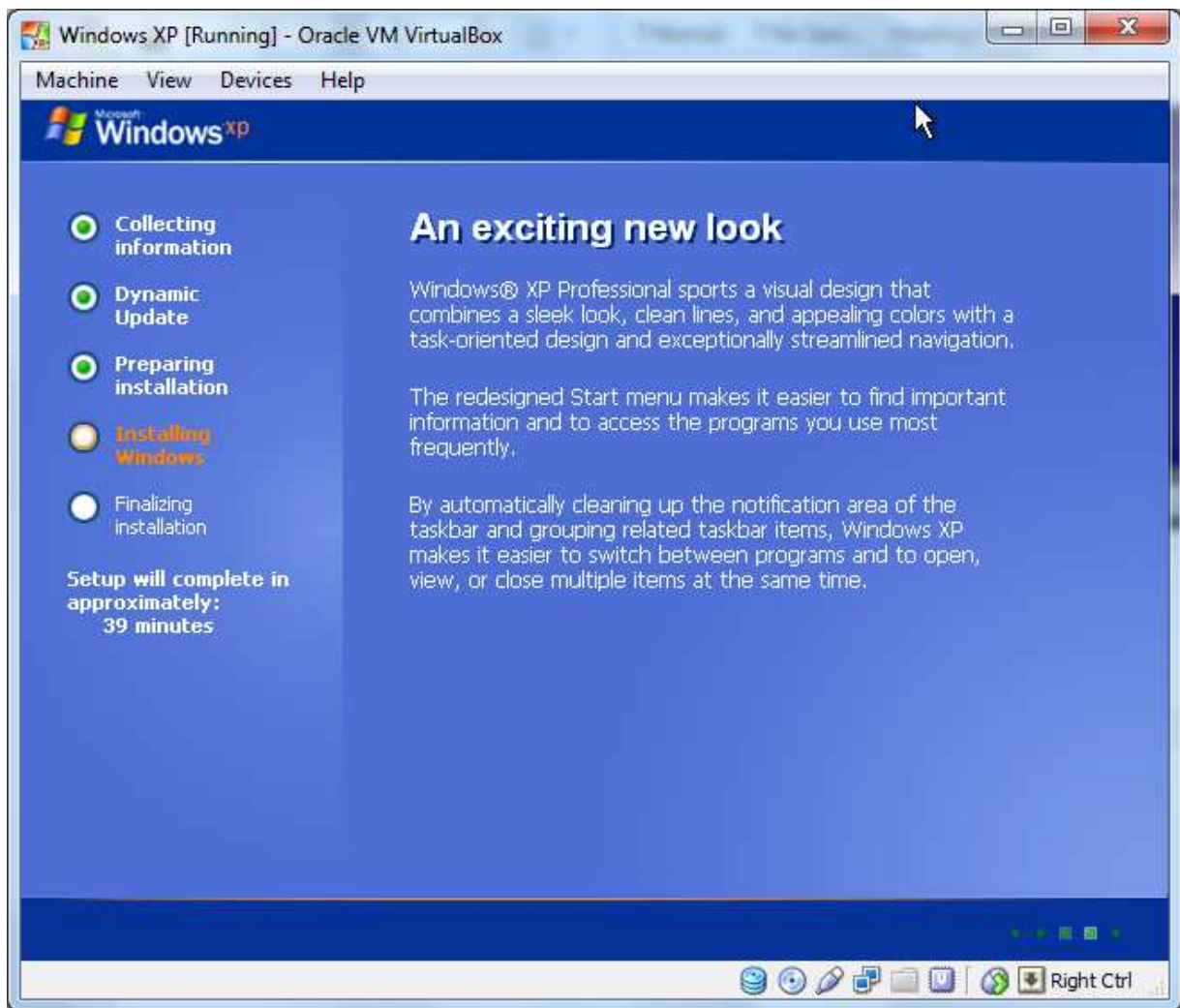
24. Use the arrow key to select and highlight “**Format the partition using the NTFS file system (Quick)**” option, and press “**Enter**” when you are presented with the following:



25. Please wait for the “**Windows XP**” Guest Operating System to complete copying the setup files. This will take a while and during this time you will see something similar to the following:



26. After copying the setup files, the Guest Operating System will reboot and you will be presented with the following:

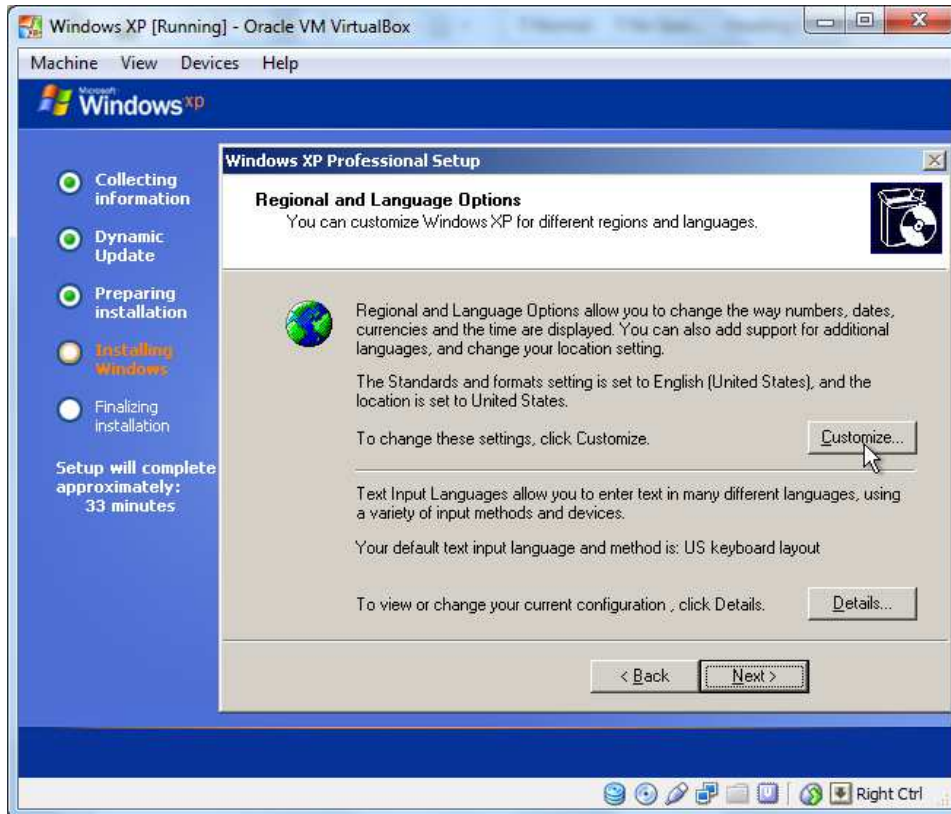


Please wait and let the installation process complete. This will take some time.

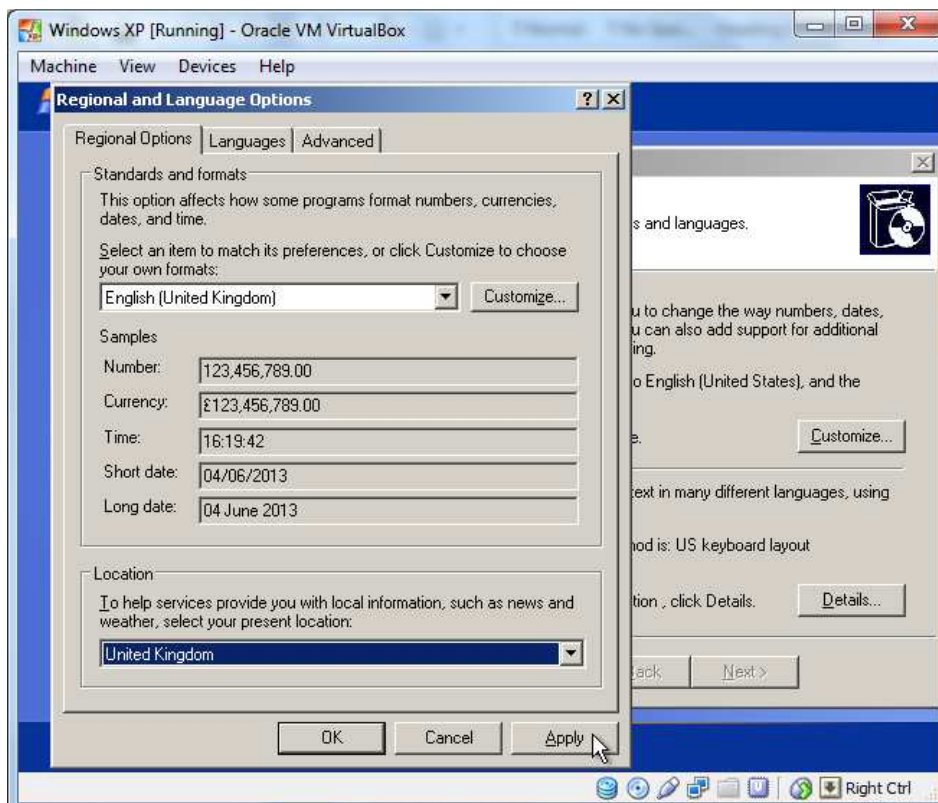
27. Next, we will customize the Guest Operating System by setting the location, language locale, keyboard format and time zone, etc. We will be using "United Kingdom" locale, UK keyboard settings, GMT time zone, etc. for this demonstration. Please select the correct settings accordingly depending on your location, language and time zone, etc.



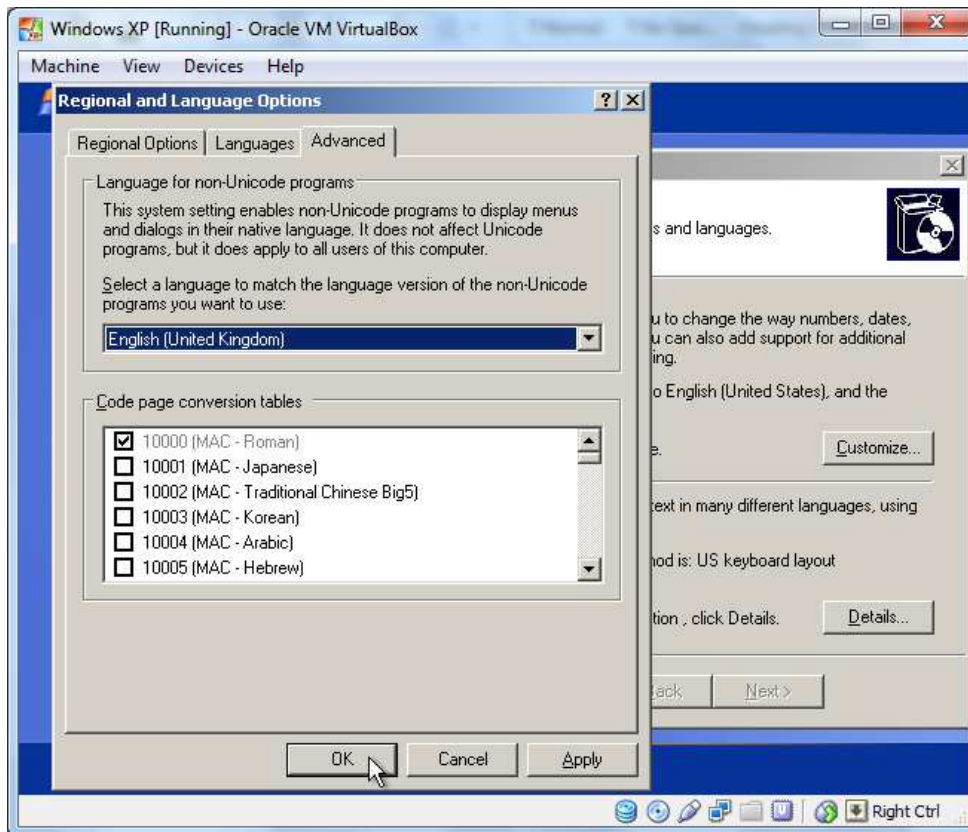
28. Click “**Customize...**” when you are presented with the following:



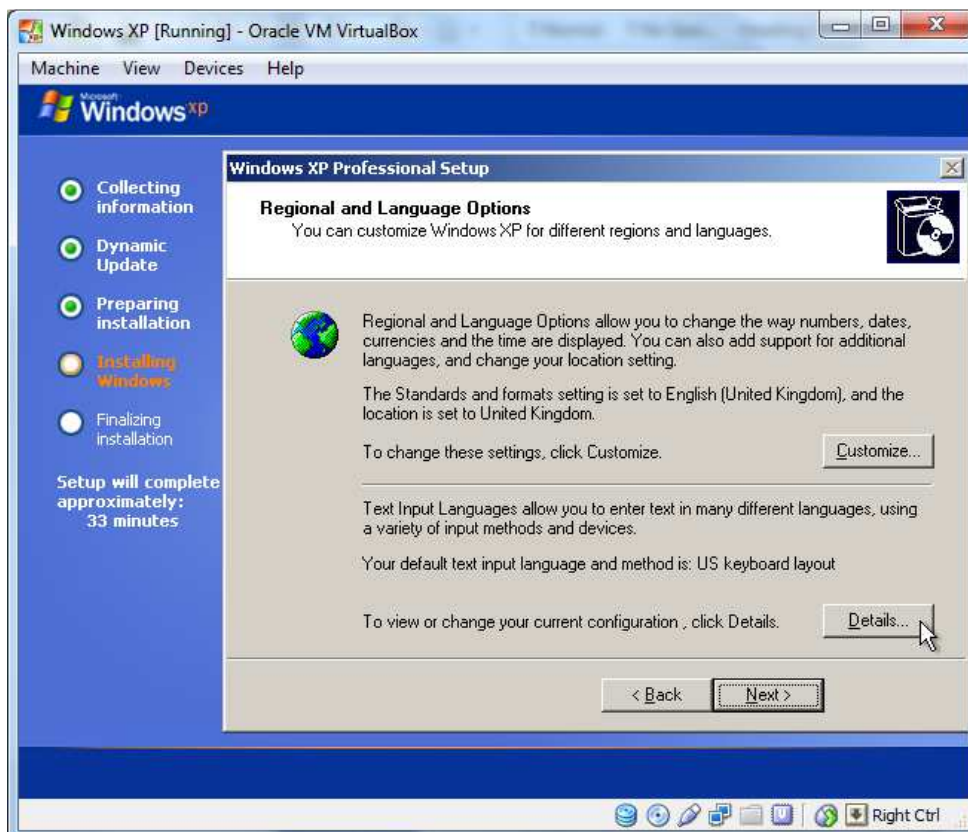
29. Select “**English (United Kingdom)**” under “**Standards and formats**” section, select “**United Kingdom**” under “**Location:**” section from the download-down lists, and click “**Apply**” when you are presented with the following:



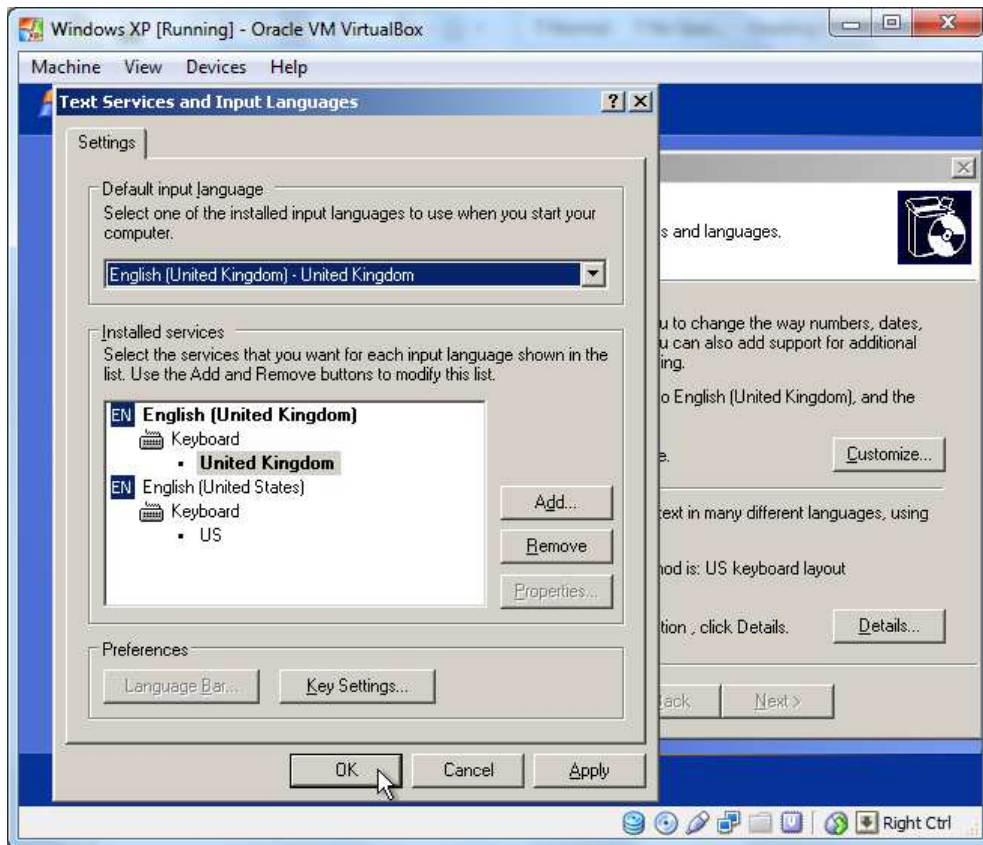
- Click “**Advanced**” tab, select “**English (United Kingdom)**” from the drop-down list under “**Language for non-Unicode programs**” section, and click “**OK**” when you are presented with the following:



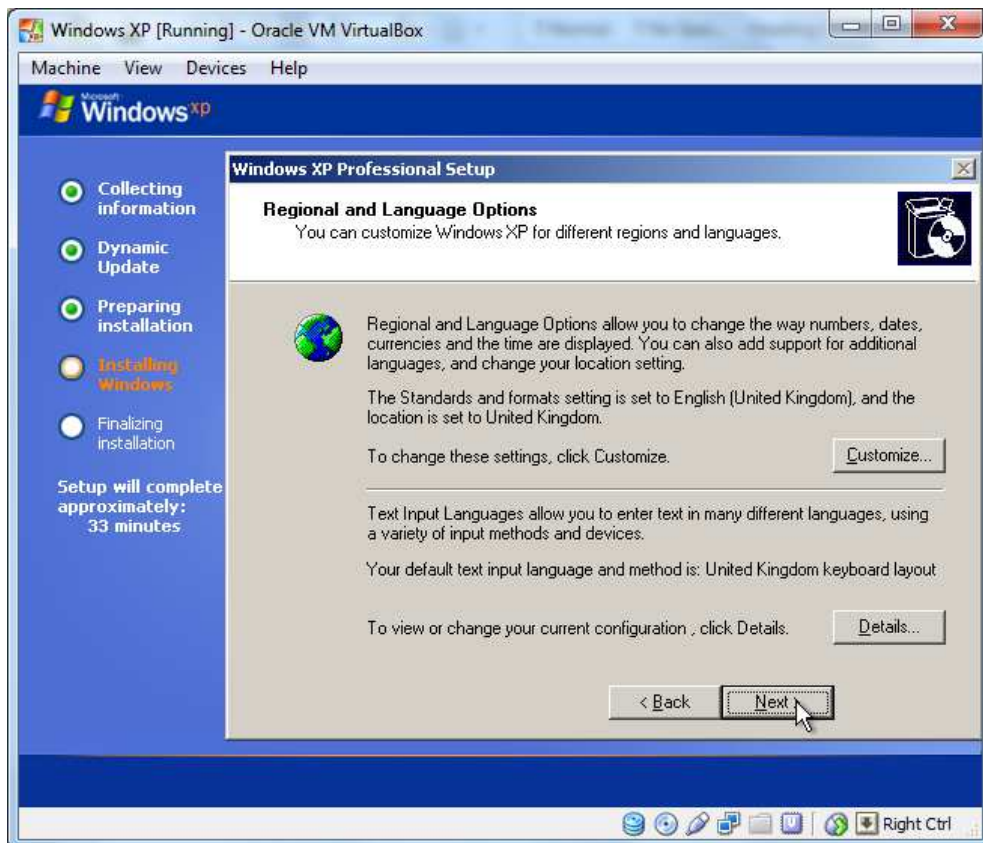
- Click “**Details...**” when you are presented with the following:



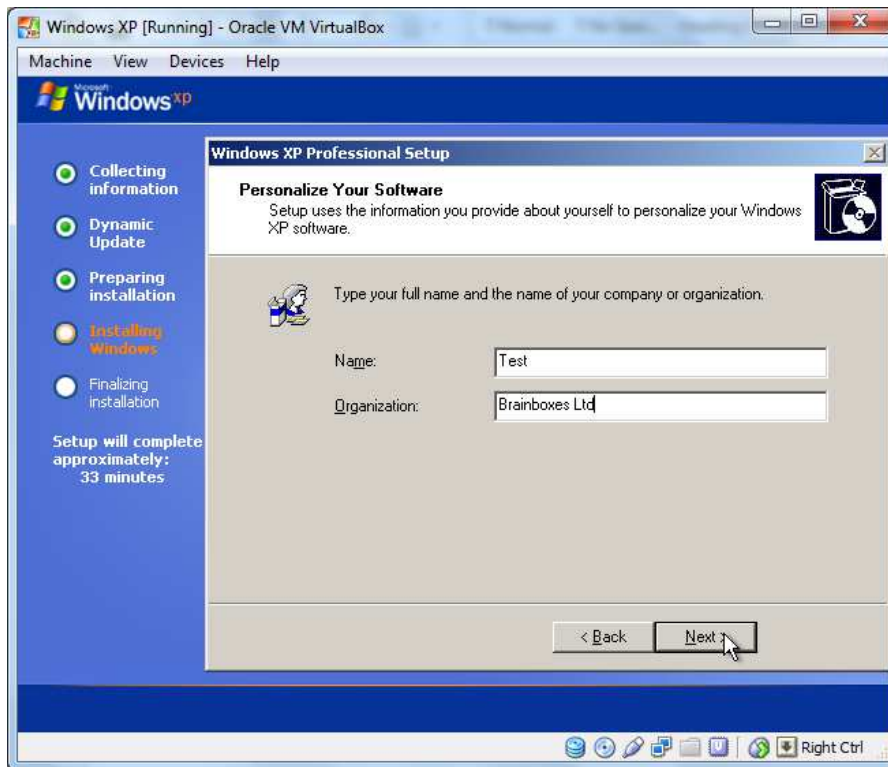
32. Select the “English (United Kingdom) - United Kingdom” from the drop-down list under the “Default input language” section, and click “OK” when you are presented with the following:



33. Click “Next >” when you are presented with the following:

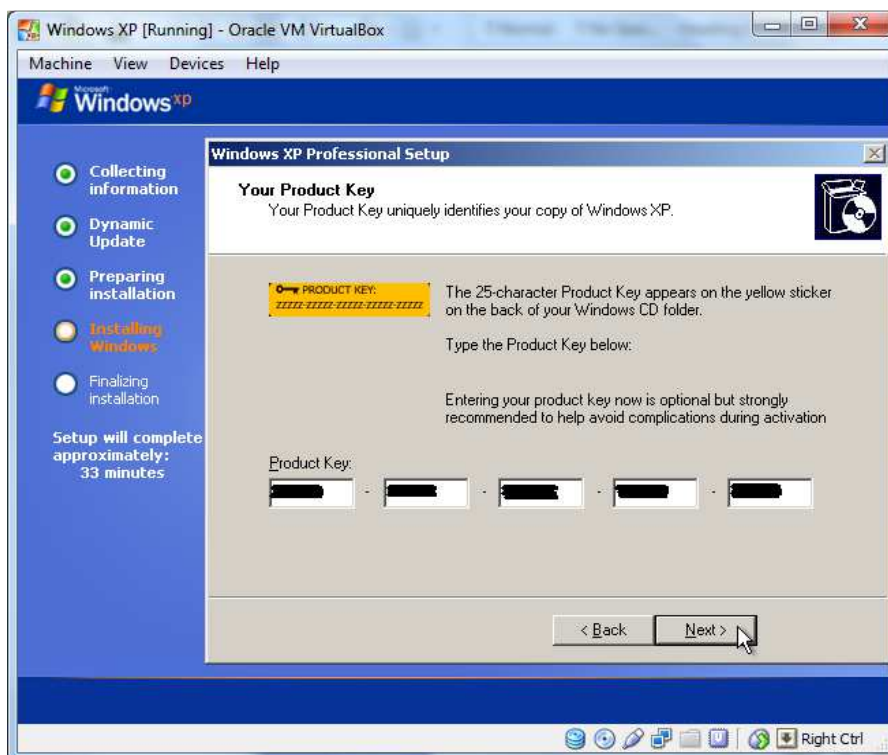


34. Enter your name and the name of your organisation, and click “**Next >**” when you are presented with the following:

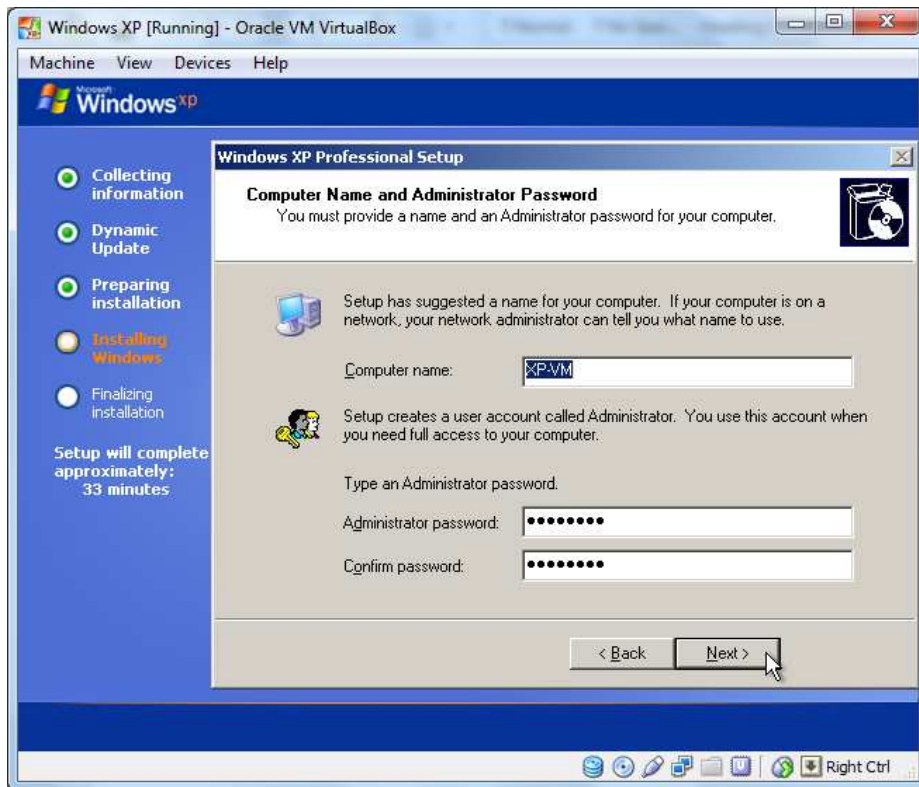


For this demonstration purpose, “**Test**” and “**Brainboxes Ltd**” are used. Please choose your own accordingly.

35. Please enter a valid “Windows XP” product key, and click “**Next >**” when you are presented with the following:

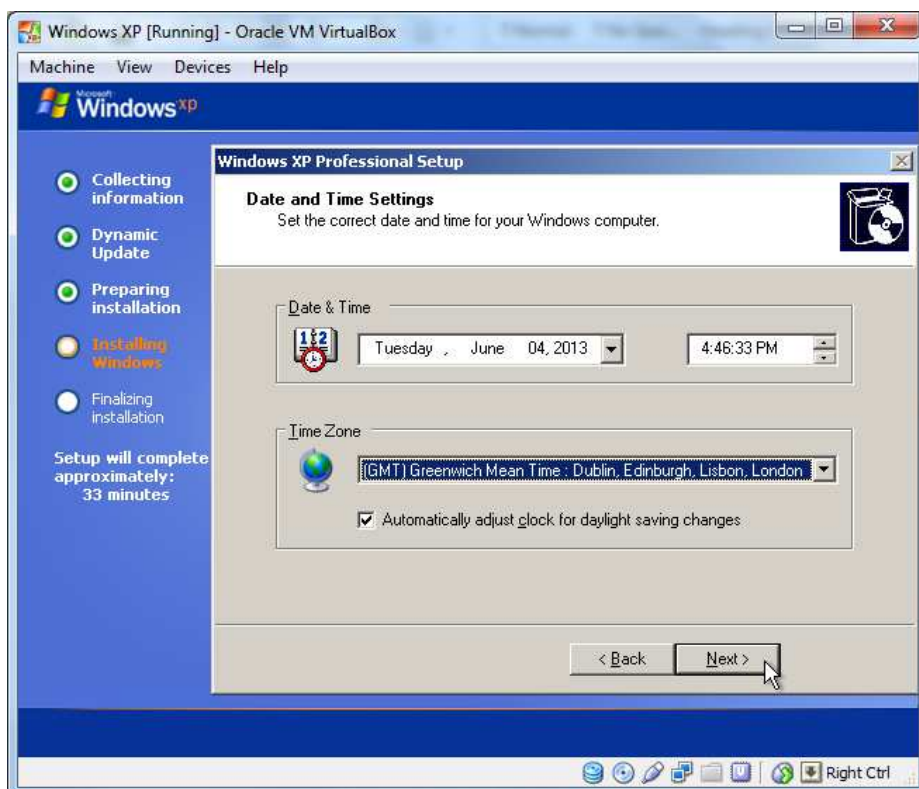


36. Enter the computer name, provide the “Administrator” password, and then click “Next >” when you are presented with the following:

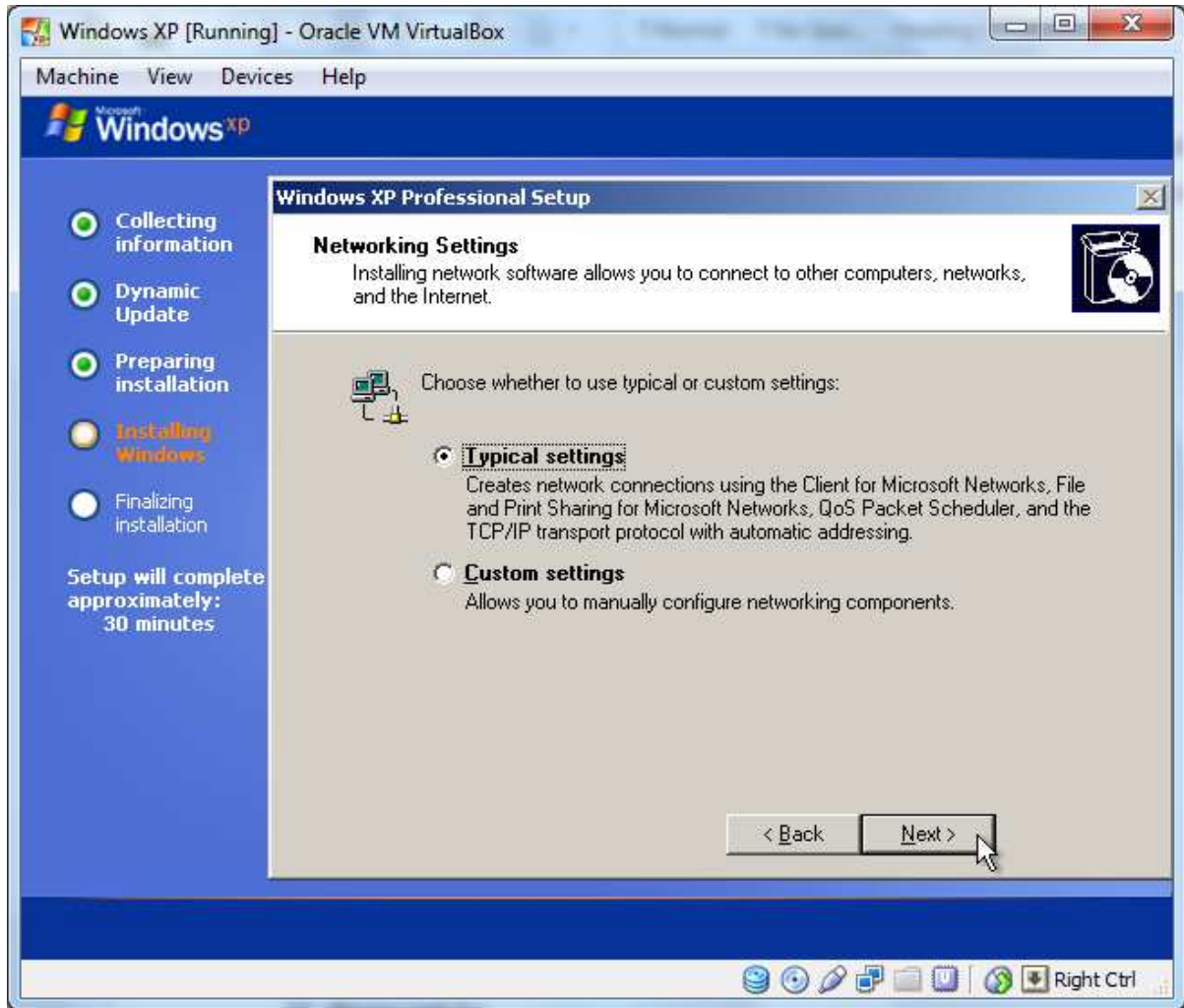


For this demonstration purpose “XP-VM” is given as a computer name. Choose your own accordingly.

37. Select “(GMT) Greenwich Mean Time: Dublin, Edinburgh, Lisbon, London” option from the drop-down list under “Time Zone” section, and click “Next >” when you are presented with the following:

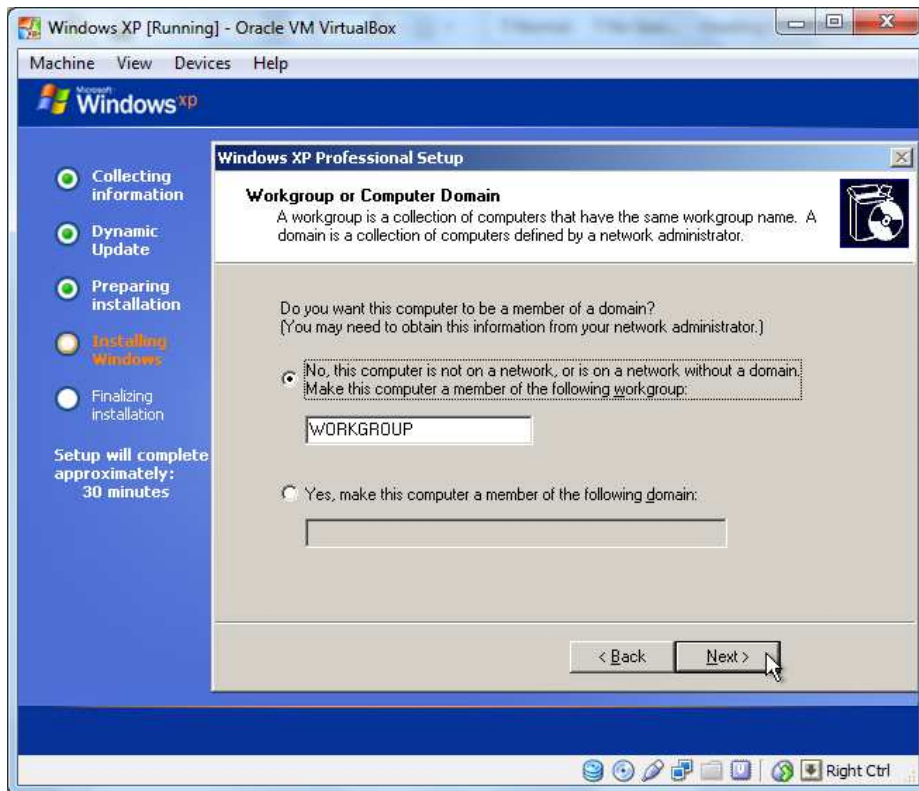


38. Select the “**Typical settings**” option, and click “**Next >**” when you are presented with the following:

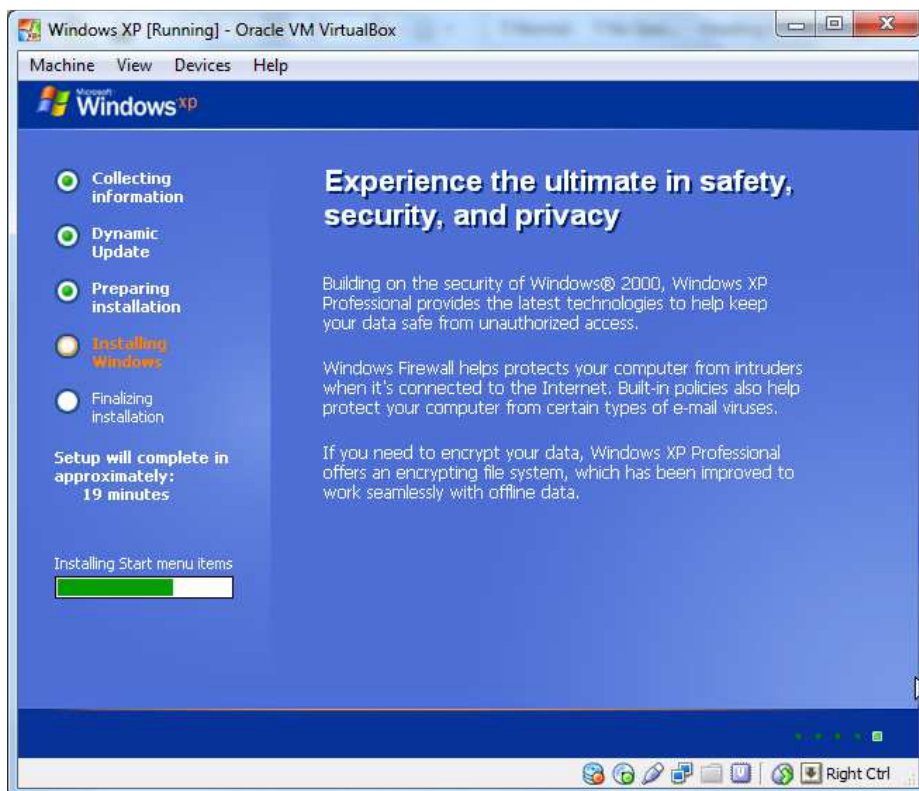


39. For this demonstration, we will not be joining the domain during the installation of the “**Windows XP**” Guest Operating System. Please see your Network Administrator if you would like to join the domain. You can also join the domain later after you have successfully installed the Guest Operating System.

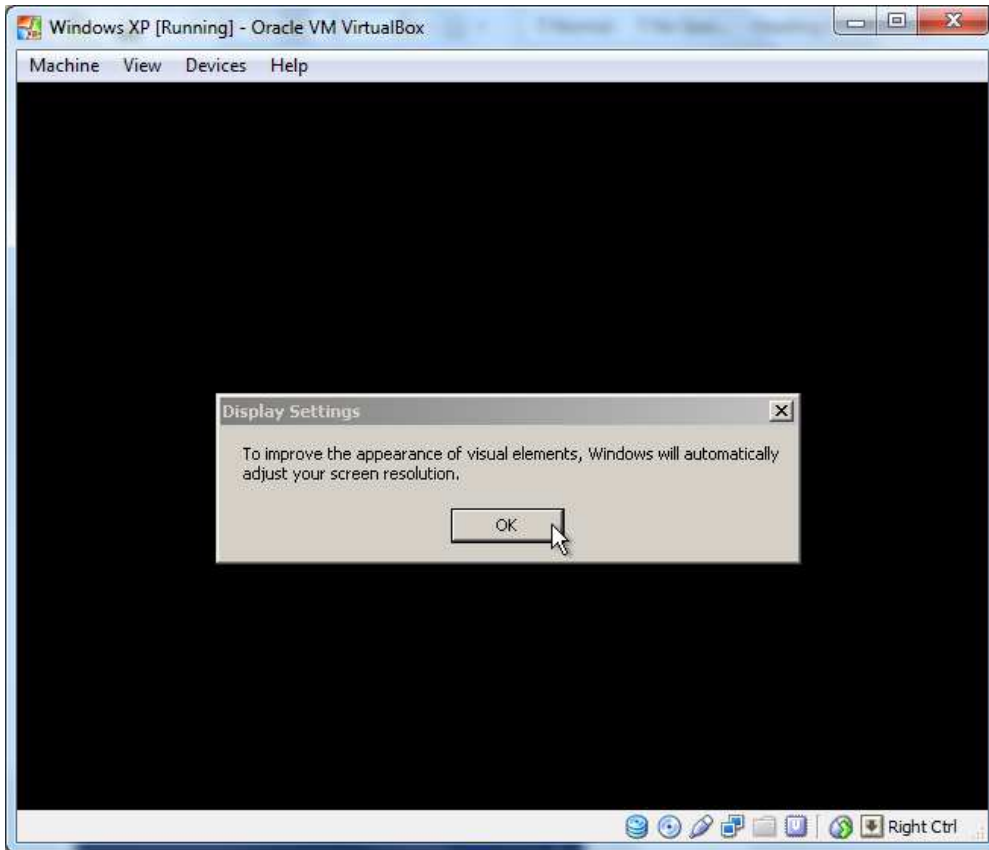
40. Leave the default settings as shown below, and click “**Next >**” when you are presented with the following:



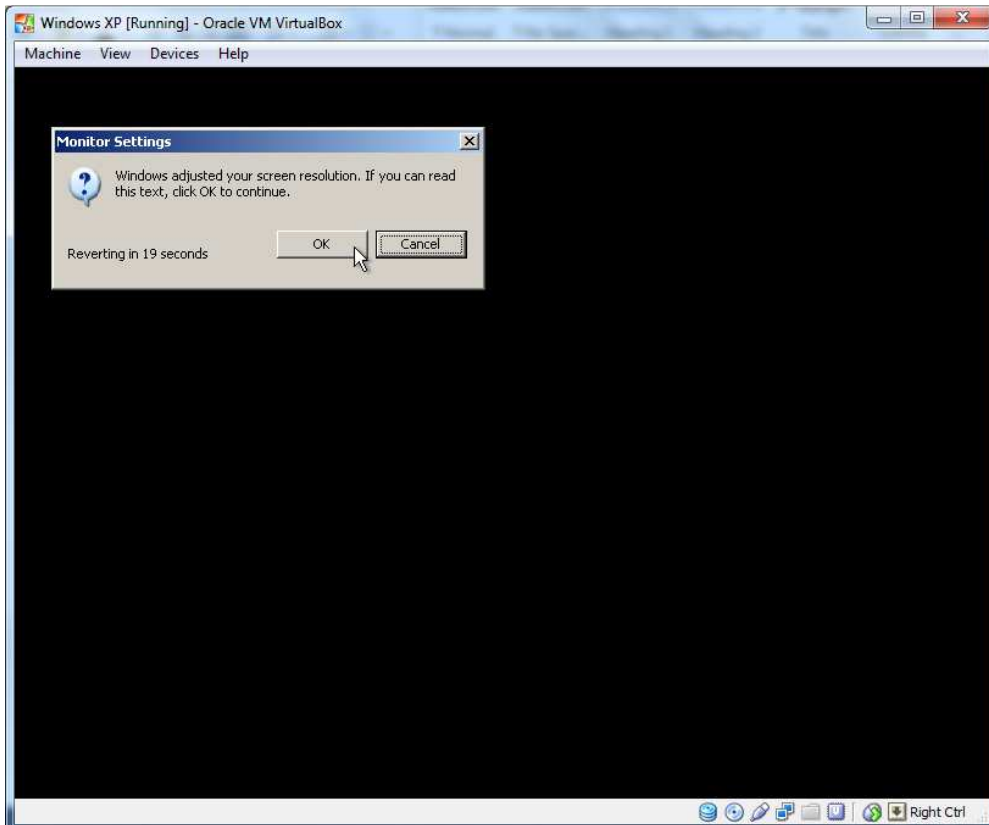
41. Please wait for the Guest Operating System installation to complete the rest of the process which will take some time, and you will be presented with something similar to the following while you are waiting:



42. After the installation the Guest Operating System will reboot. Click **“OK”** when you are presented with the following:



43. Click **“OK”** again when you are presented with the following:





44. Click “**Next**” when you are presented with the following:



45. Select “**Help protect my PC by turning on Automatic Updates now**” option, and click “**Next**” when you are presented with the following:



46. Click “**Skip**” when you are presented with the following:



You could set up these settings later once you can boot successfully into “**Windows XP**” Guest Operating System.

47. Select the option “**No remind me every few days**” option, and click “**Next**” when you are presented with the following:



You can activate the “**Windows XP**” Guest Operating System later once you can boot into it successfully.

48. Enter a username of your choosing to create an account for the Guest Operating System, and click “**Next**” when you are presented with the following:

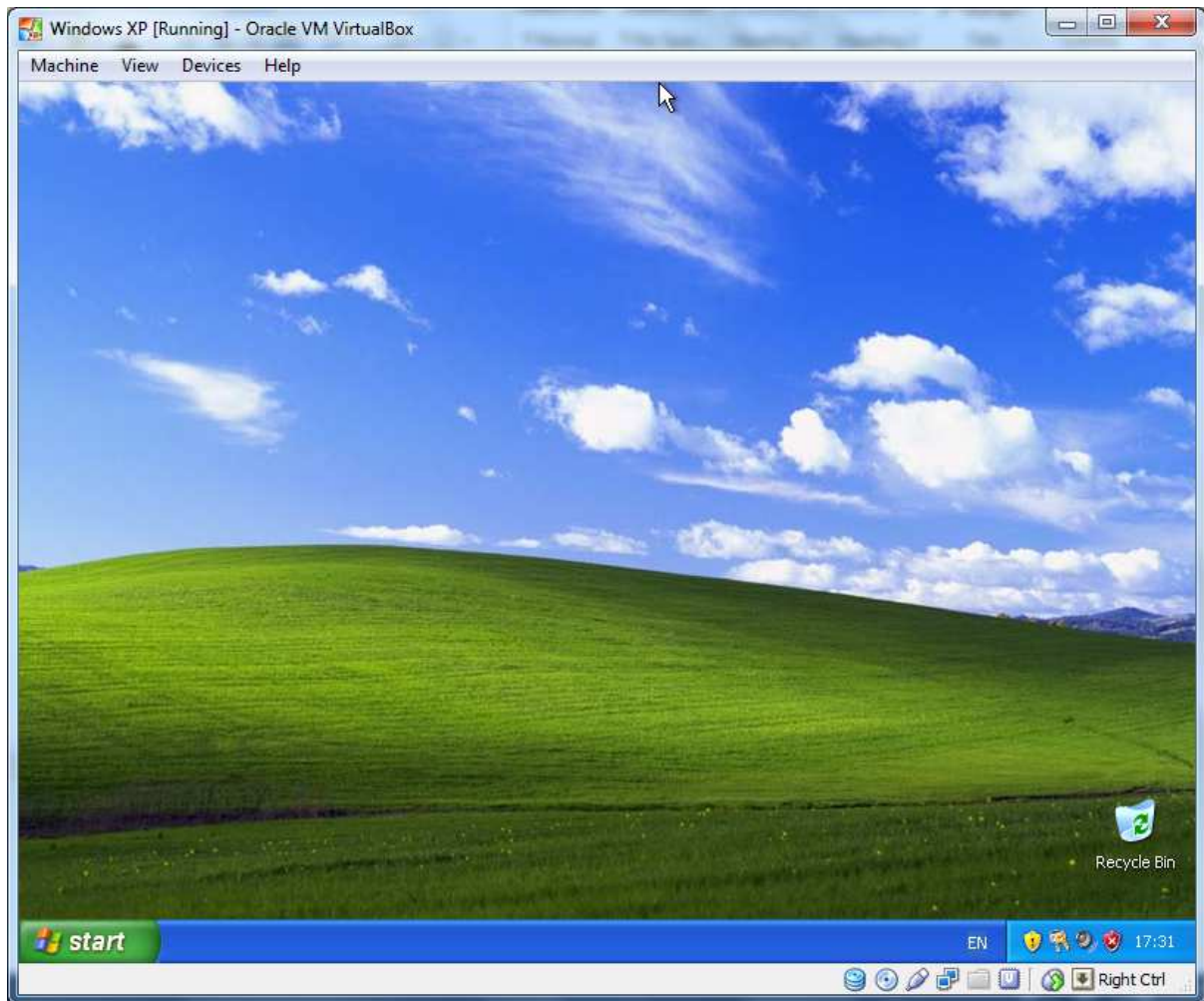


For this demonstration purpose, a user “**Test**” is used. Please create and choose your own user account name/s accordingly. You could create up to 5 users at this stage.

49. Click “**Finish**” when you are presented with the following:

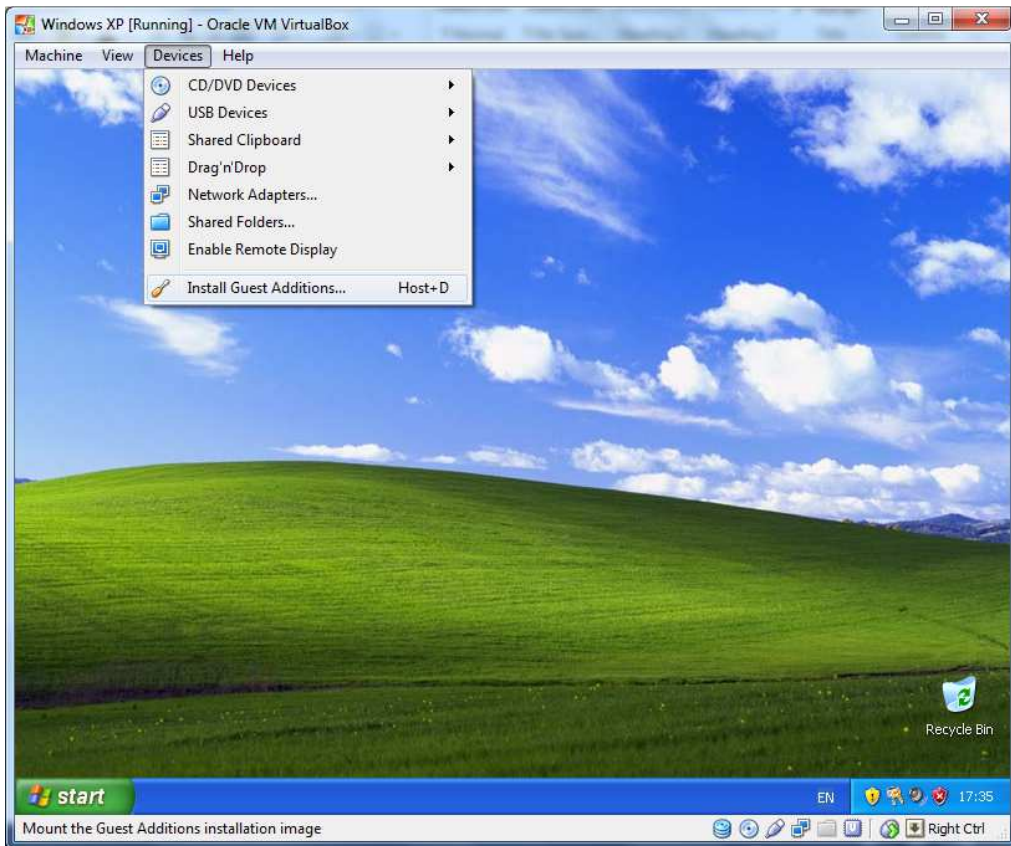


50. Now you have successfully install “**Windows XP**” Guest Operating System, and will be presented with a familiar “**Windows XP**” environment as shown below:

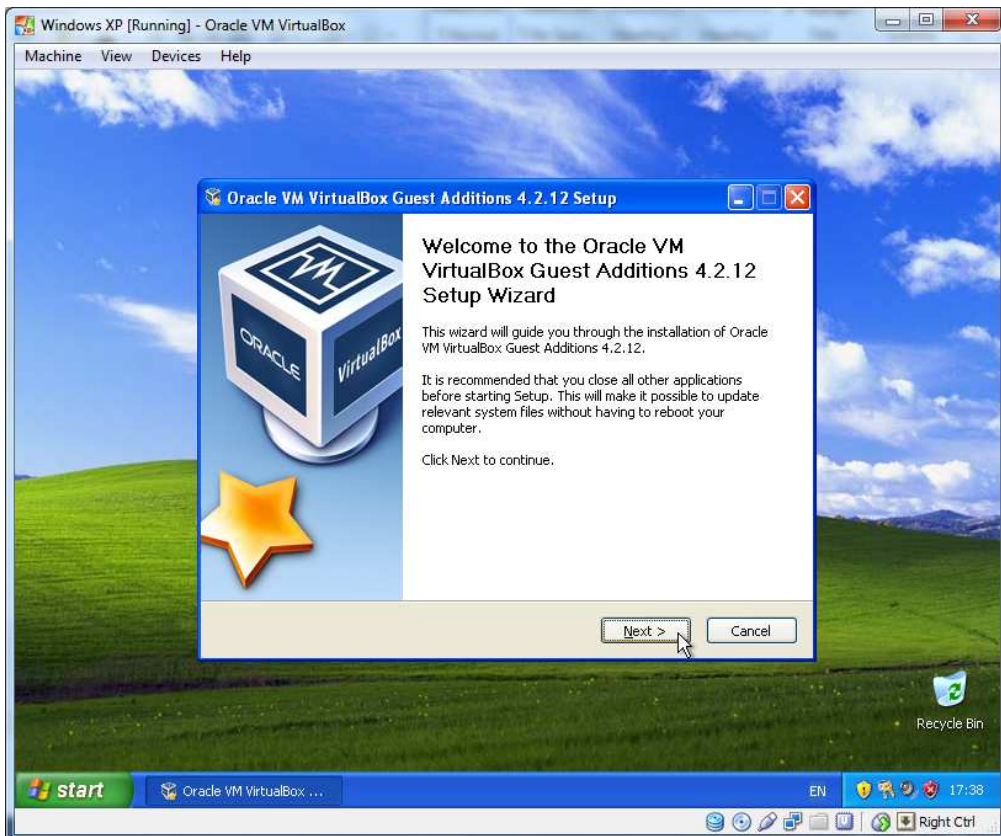


51. Next we have to install the “**Guest Additions**” so that we have an improve capabilities and compatibility of the of the “**Windows XP**” Guest Operating System, and this will also improve the interactivity between the guest and Host Operating System.

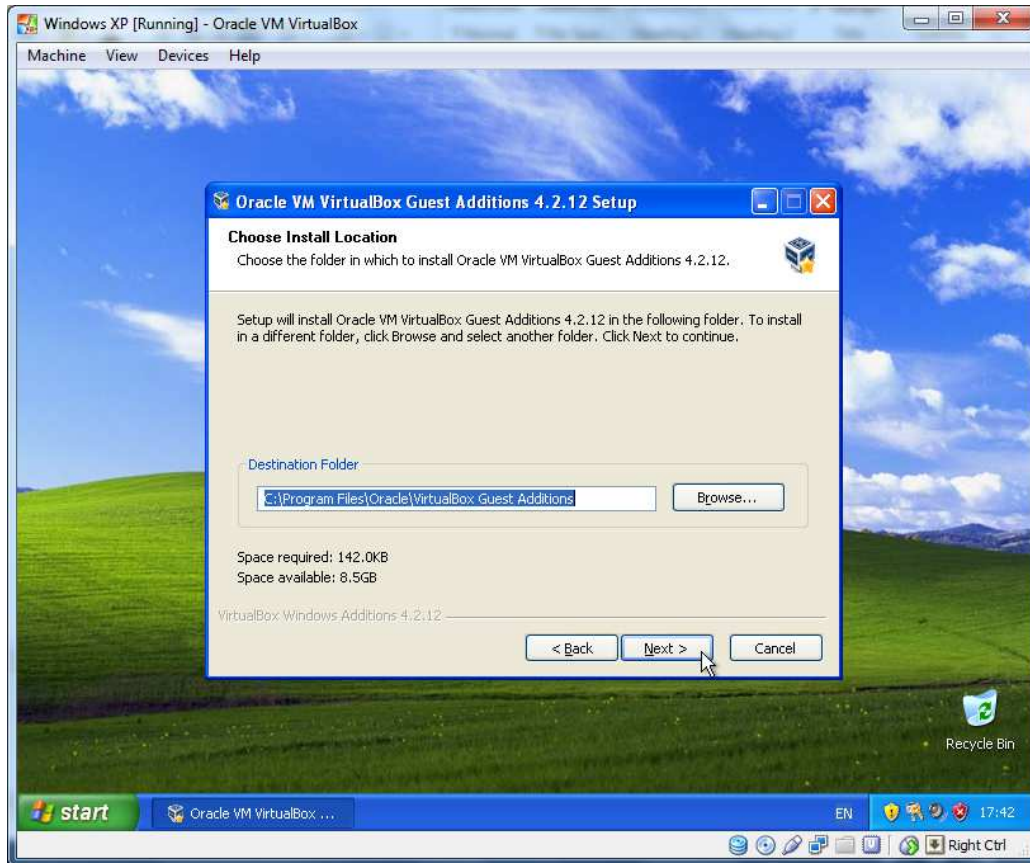
52. Click on “**Devices**”, and then click “**Install Guest Additions...**” as shown below:



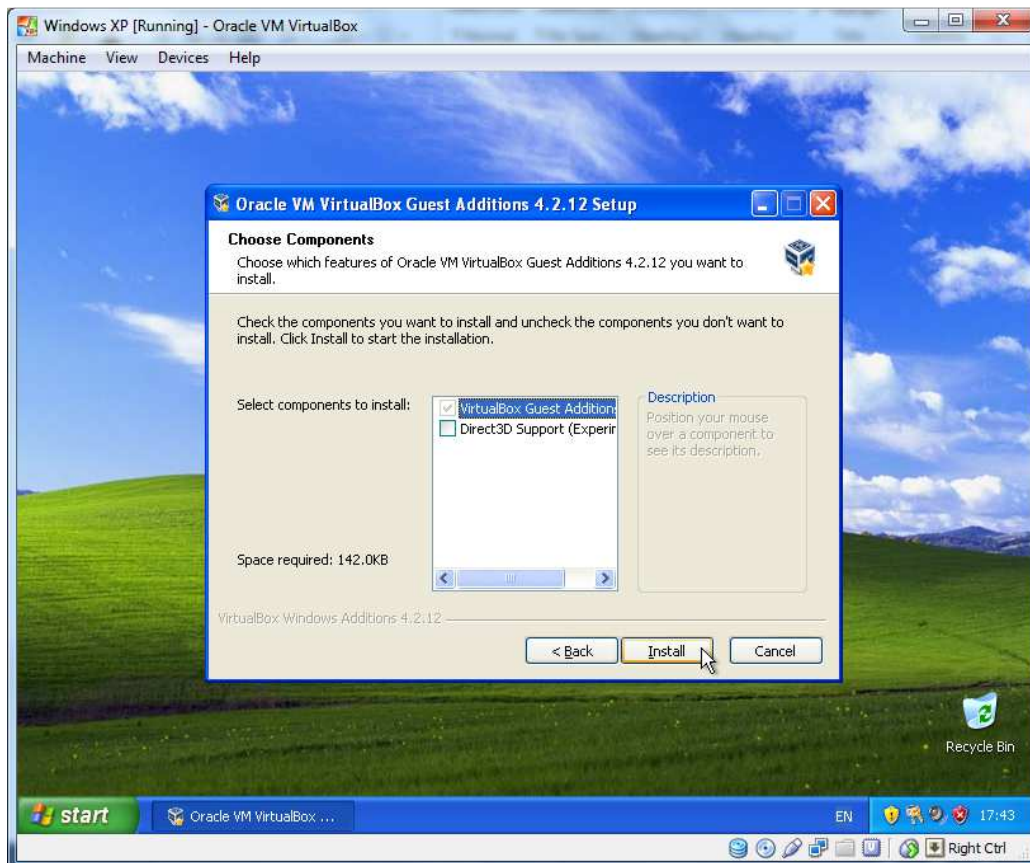
53. Click “**Next >**” when you are presented with the following:



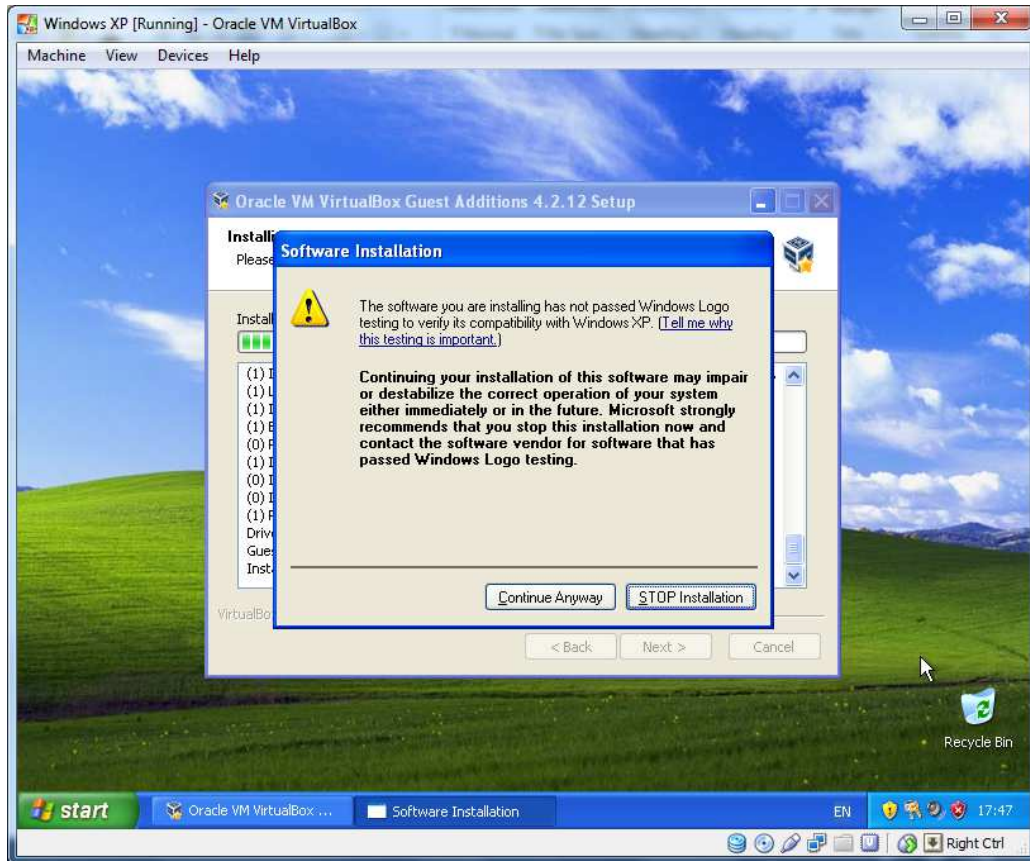
54. Click “Next >” when you are presented with the following:



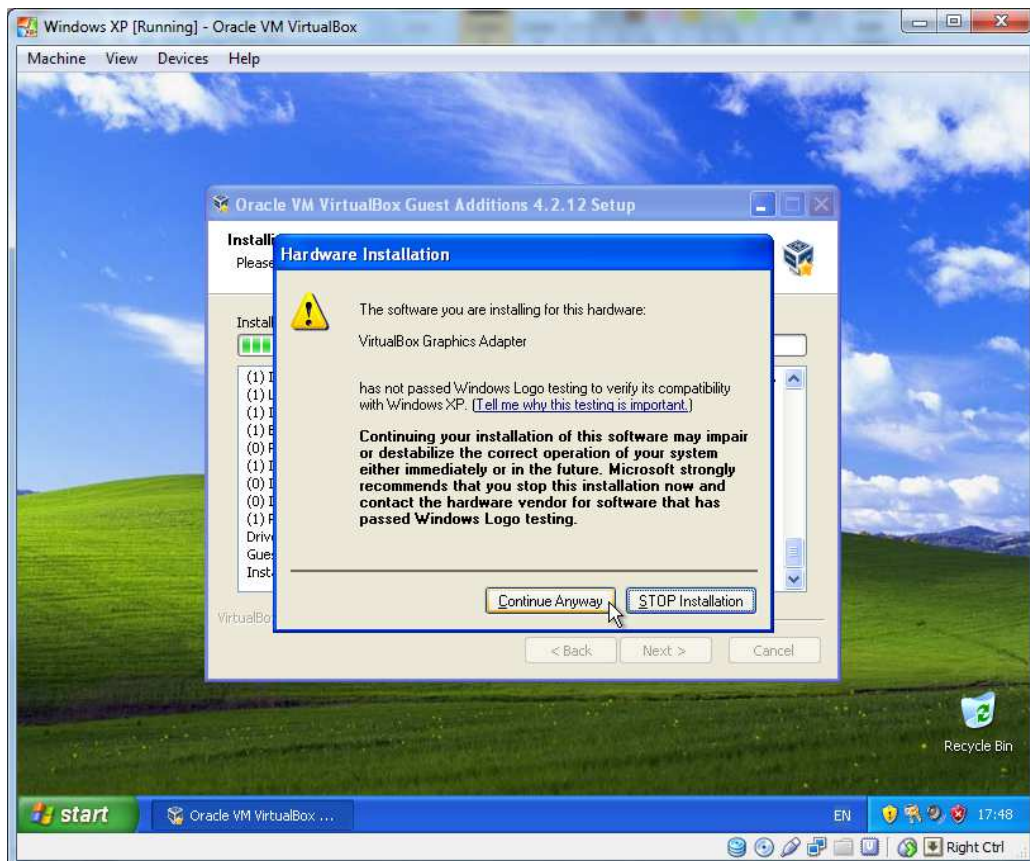
55. Click “Install” when you are presented with the following:



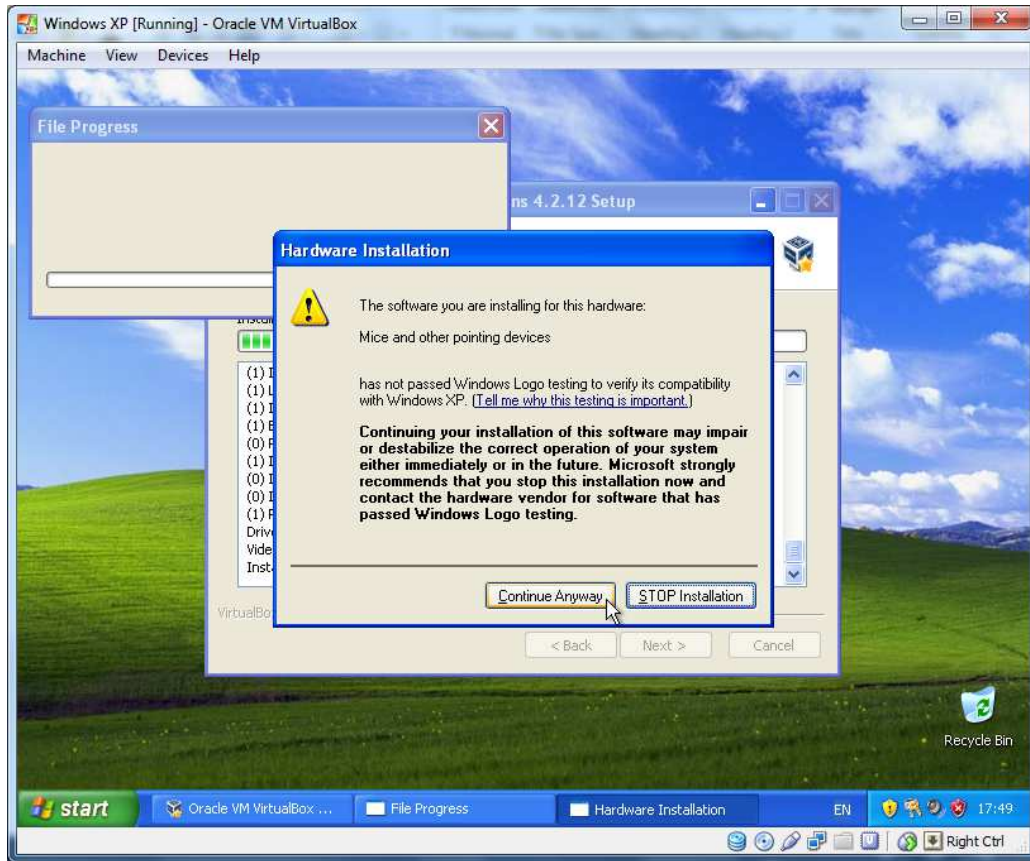
56. Click “Continue Anyway” when you are presented with the following:



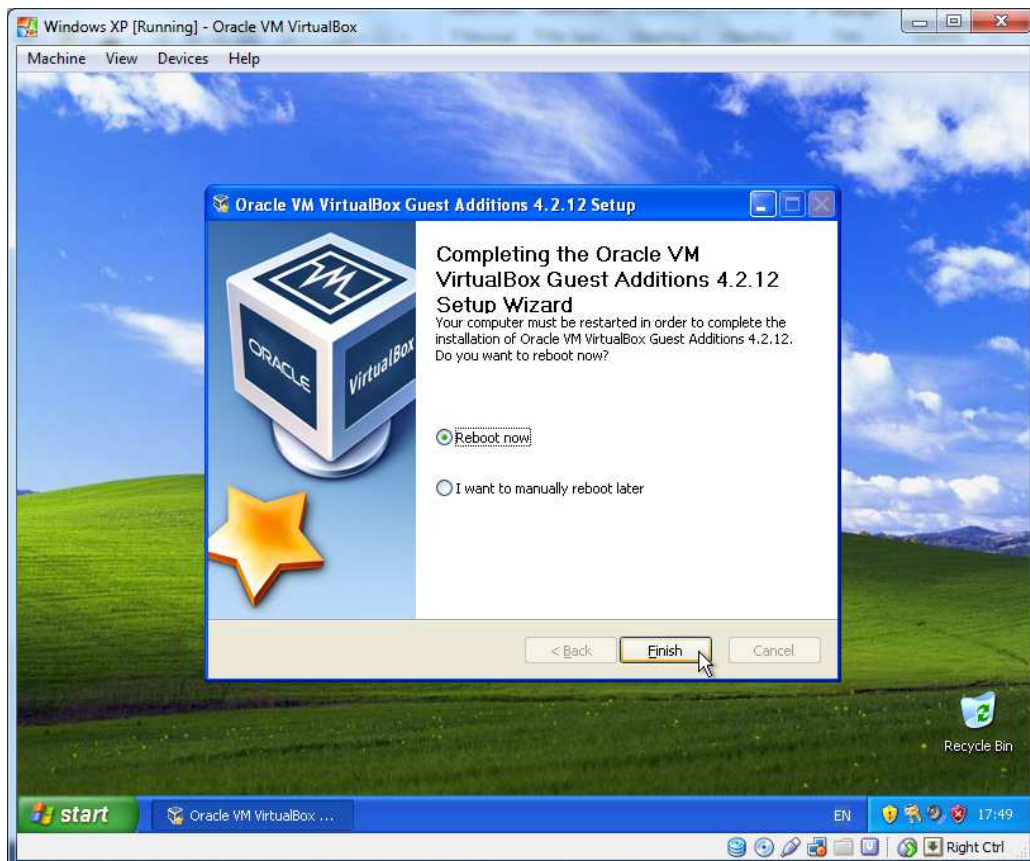
57. Click “Continue Anyway” when you are presented with the following:



58. Click “Continue Anyway” when you are presented with the following:



59. Select “Reboot now” option, and click “Finish” when you are presented with the following:





60. Please wait until the Guest Operating System rebooted successfully.
  
61. Now “Windows XP” Guest Operating System is ready to be used for Serial Port communication. You will be using **COM1** of the “Windows XP” Guest Operating System which will be **COM5** of the “Windows 7” Host Operating System as we have mapped in **Step 13**. Inside the Guest Operating System, **COM1** will appear as a legacy serial port with legacy I/O resources. Now you could run application inside the Guest Operating System which required legacy serial port resources by using **COM1**.

## 1. Version History

Version	Date	Author	Checked By	Comments
1	12/06/2013	Seng Seng Du	R&D	